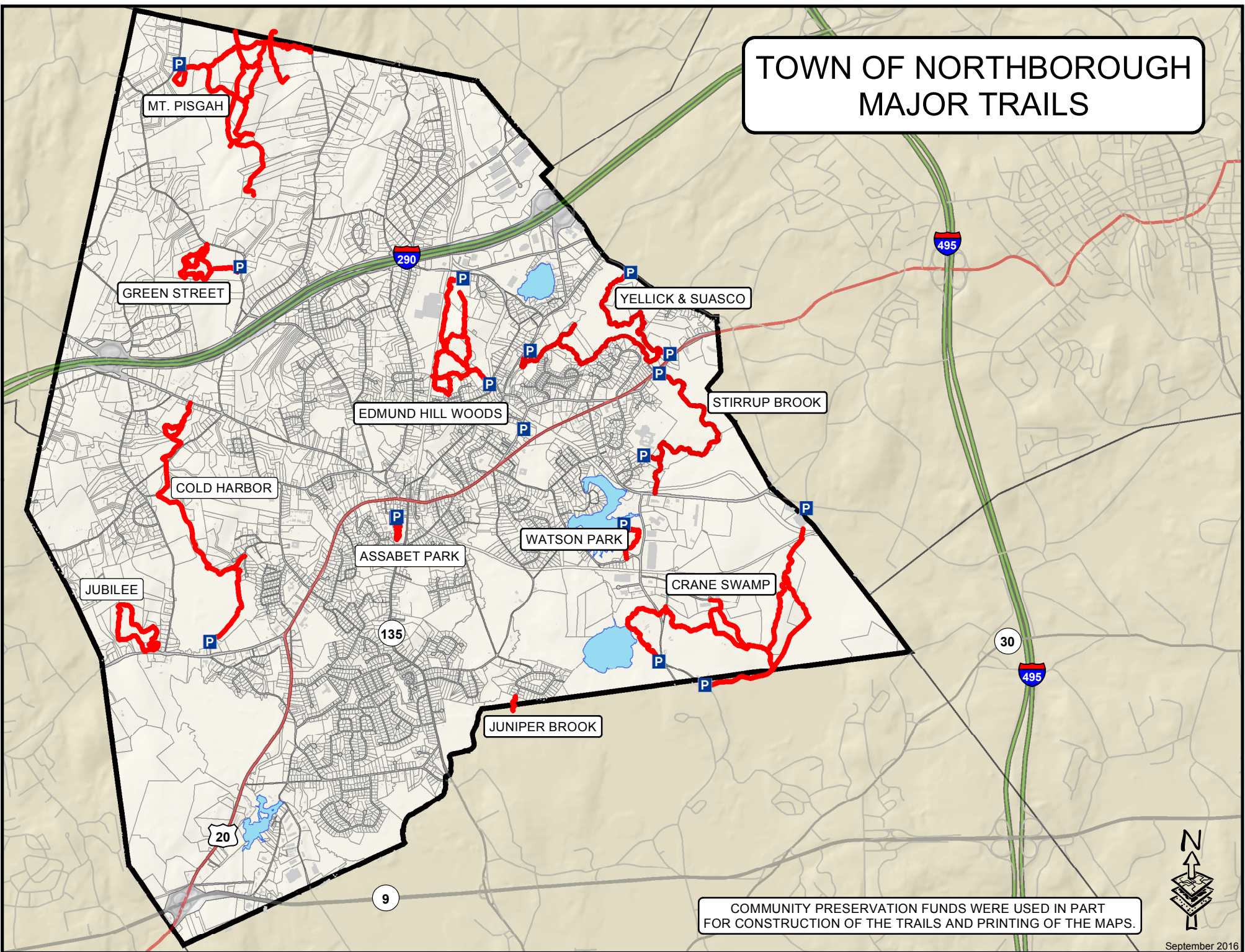


# TOWN OF NORTHBOROUGH MAJOR TRAILS



COMMUNITY PRESERVATION FUNDS WERE USED IN PART  
FOR CONSTRUCTION OF THE TRAILS AND PRINTING OF THE MAPS.





## About This Property

The Mount Pisgah Conservation Area is one of the largest conservation areas in this part of the state. It connects to an extensive network of conserved lands that stretch west to the Wachusett Reservoir and north into New Hampshire, creating a much-needed corridor for wildlife.

SVT works with landowners and municipalities to protect lands on and around Mount Pisgah. The trails at Mount Pisgah Conservation Area are managed by the respective landowners (see map). **Please report any problems, such as downed trees, to the appropriate manager.**

**Please note:** Some of the land on Mount Pisgah is privately owned. Please stay on the marked trails, respect posted rules, and do not enter lands marked as private.

## Features of Note

- The extensive wildlife corridor in this region can bring unusual visitors to Mount Pisgah, including bobcat, black bear, and moose. In addition, Howard Brook flows through the area and is home to native brook trout.
- Much of Mount Pisgah was once farmland, and the Sparrow and Mentzer trails were named for two dairy farmers. Other trails named for past residents of the area include Tyler and Bennett.
- The Mentzer Trail is the main nature path and crosses Berlin Road Trail, which was an old cart path, as evidenced by its greater width. From the Mentzer Trail, you can see the remains of the stone foundation of a home.
- At the Tyler junction, you can cross over bare rocks to the North View, from which you may see the Boston skyline on a clear day.
- From the North View, follow the Tyler Trail to the South View, which overlooks Hudson. At the South View, deep scratches (glacial striations) in the bedrock show the direction of the glacier's path as it scoured through the area.

**Learn more:**

[www.svtweb.org/MountPisgah](http://www.svtweb.org/MountPisgah)



## Trail Policies and Regulations

Mount Pisgah Conservation Area is a complex of lands with a variety of owners, both public and private. Please respect posted policies.

The following are prohibited:

- Motorized vehicles
- Camping
- Fires
- Disposing of trash or yard waste
- Cutting or removing plants

**Hunting is allowed** on Town of Berlin lands, Dept. of Fish and Game land, Northborough Wildlife Cons. Easement, and some private properties. Be aware of seasons and consider wearing blaze orange.

Dog walkers:

- Pick up and dispose of dog waste.
- Keep dogs on trails.
- Keep dogs out of ponds/streams/vernal pools.
- Put dogs on a leash when other hikers approach.

## Directions

With mapping software, search for this address:  
24 Smith Road Northborough, MA

From Interstate 495, take Exit 26 to Route 62 west. Go 1.8 miles to the center of Berlin. Bear left onto Linden Street (flashing yellow light). Follow Linden Street for 1.6 miles. Turn left onto Ball Hill Road. Proceed for 1.3 miles to a small parking lot on the left, shortly after the Northborough town line.

## Support SVT

SVT protects open spaces and natural areas in 36 communities around the Sudbury, Assabet, and Concord Rivers. We care for thousands of acres of land that provide habitat for native wildlife, and we maintain more than 60 miles of trails for public enjoyment. SVT relies upon the support of our members to be successful.

**Join Us! Help protect these lands forever.**  
[www.svtweb.org](http://www.svtweb.org)



# Mount Pisgah Trail Map



## BERLIN, NORTHBOROUGH, AND BOYLSTON

*This map includes trails that cross properties owned and maintained by private landowners, the Town of Berlin, the Town of Northborough, and the Mass. Division of Fisheries and Wildlife.*

*Please respect private property and stay on the trails*



18 Wolbach Road  
Sudbury, MA 01776-2429  
978-443-5588

[www.svtweb.org](http://www.svtweb.org)  
Facebook: @SudburyValleyTrust  
Instagram: sudbury\_valley\_trustees



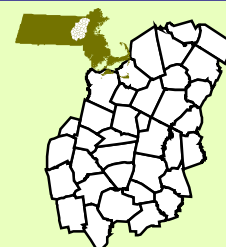
# Mount Pisgah, Berlin and Northborough



- Parking
  Trail
  Water Body
  Road
  SVT CR
- Bridge
  Private
  Wetland
  SVT
  Other Owner



Download  
Map



## Love open spaces? Support SVT!

Sudbury Valley Trustees is a nonprofit conservation organization that protects land for the benefit of people and wildlife. Help us keep these trails open for all to enjoy. **Join or Donate today! [www.svtweb.org](http://www.svtweb.org)**

Map produced by Sudbury Valley Trustees. Data Provided by Office of Geographic and Environmental Information (MassGIS), Commonwealth of Massachusetts Executive Office of Energy and Environmental Affairs. This Map should be used for reference only. Boundary lines are approximate.



## About This Property

Sweeping meadow views greet you at the Town of Northborough's Green Street land. The Northborough Trails Committee has created trails that take you across the Green Street field, over Howard Brook, and onto the steep wooded hillside. Howard Brook—a tributary of the Assabet River—is a cold-water stream that supports native brook trout.

## Features of Note

- The fields on the Green Street land and the privately owned Rawstron land are mowed regularly to maintain their open character and protect a type of wildlife habitat that is becoming less common in our region.
- Similarly, the private owners of the Rawstron Woods land actively manage the forest to maintain a quality habitat for birds and other animals, such as moose and bobcat. SVT holds conservation restrictions over all three properties.
- A sloped bridge crosses the stone wall and a stream along Green Street, allowing access from the northern tip of the property.
- A small man-made pond serves as a reminder of the land's agricultural past. Until recently, the pond served as a watering hole for the cows that grazed here.
- The forested portion of the land is dominated by mature eastern white pines, with occasional scattered oaks, beeches, and other hardwoods.

**Learn more:**

[www.svtweb.org/GreenStreet](http://www.svtweb.org/GreenStreet)



## Trail Policies and Regulations

These policies apply to SVT properties on the map. Properties owned by other entities have their own posted policies.

The following are prohibited:

- Motorized vehicles
- Camping
- Bicycling
- Fires
- Disposing of trash or yard waste
- Cutting or removing plants

Dog walkers:

- Pick up and dispose of dog waste.
- Keep dogs on trails.
- Keep dogs out of ponds/streams/vernal pools.
- Put dogs on a leash when other hikers approach.

*See our full dog-walking policy on the trail head kiosk.*

## Directions

With mapping software, search for this address:  
200 Green Street Northborough, MA

From the center of Northborough, on Route 20, follow Church Street northwest 0.2 mile. Turn Right onto Howard Street and continue 0.9 mile. Bear left onto Green Street. After approximately 0.8 mile, the parking lot will be on your left.

## Support SVT

SVT protects open spaces and natural areas in 36 communities around the Sudbury, Assabet, and Concord Rivers. We care for thousands of acres of land that provide habitat for native wildlife, and we maintain more than 60 miles of trails for public enjoyment.

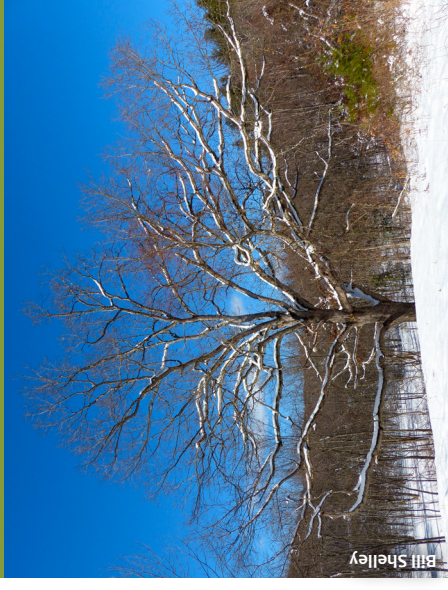
SVT relies upon the support of our members to be successful.

**Join Us! Help protect these lands forever.**

[www.svtweb.org](http://www.svtweb.org)



# Green Street CR Trail Map



## NORTHBOROUGH

*This map includes trails that cross properties owned and maintained by the Town of Northborough.*



18 Wolbach Road  
Sudbury, MA 01776-2429  
978-443-5588

[www.svtweb.org](http://www.svtweb.org)

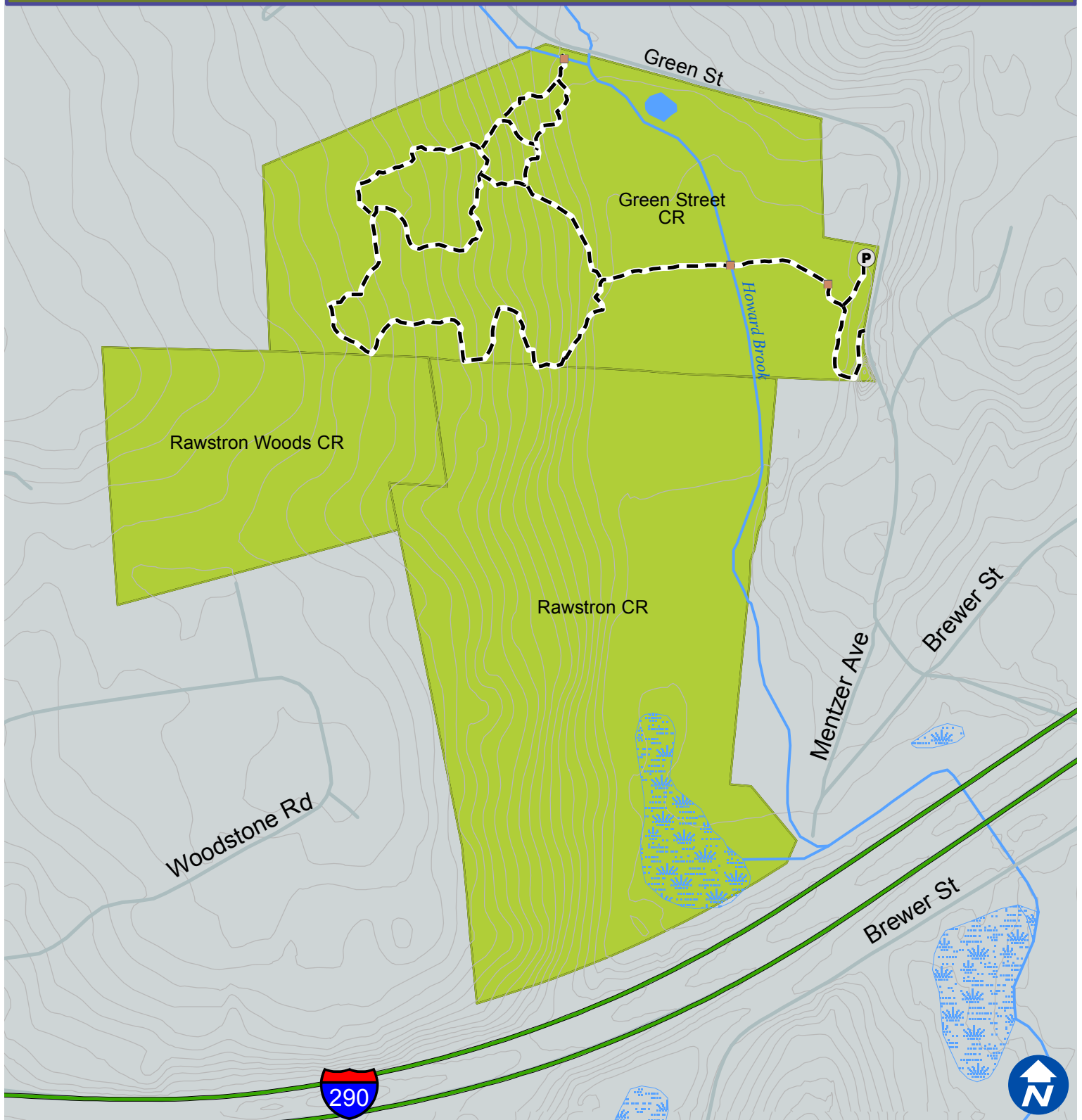
Facebook: @SudburyValleyTrust

Twitter: @TweetSVT

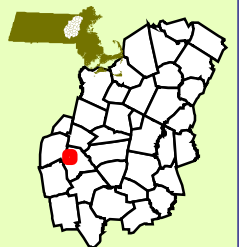
Instagram: sudbury\_valley\_trustees



# Green Street CR, Northborough



- Parking   - - Trail   Water Body   — Road   SVT CR  
■ Bridge   Wetland   SVT   Other Owner



## Love open spaces? Support SVT!

Sudbury Valley Trustees is a nonprofit conservation organization that protects land for the benefit of people and wildlife. Help us keep these trails open for all to enjoy. **Join or Donate today! [www.svtweb.org](http://www.svtweb.org)**

How to Get Here



## About This Property

SVT's Cedar Hill and Sawink Farm Reservations are part of the Crane Swamp Conservation Area, which covers 2,225 acres and includes lands owned by Massachusetts Water Resources Authority and several state agencies. These conserved lands help to protect the public water supply for 2.5 million people. Tributaries to the Assabet and Sudbury Rivers pass through the area.

The four small hills here, including Cedar Hill, are drumlins, or elongated hills of glacial drift. Sawink Farm was likely a subsistence farm in colonial times, with pastureland, cropland, and perhaps a woodlot.

## Features of Note

- SVT's trails connect to those on the state lands. The Westborough Charm Bracelet Trail (WCBT) and the new Boroughs Loop Trail also wind through the area.
- The centerpiece of the Crane Swamp Conservation Area is a 400-acre red maple swamp surrounded by a complex of open fields, wet meadows, ponds, pine plantations, and oak-pine forests, with Cedar Hill to the west and Walnut Hill to the northeast.
- At Cedar Hill, SVT is restoring a shrub habitat that is essential for birds such as eastern towhee and blue-winged warbler, as well as for some butterflies and other insects.
- On the north slope of Cedar Hill is a cleared patch where SVT is working to control Japanese barberry, an invasive shrub.
- Wildlife species in the area include bobcat, coyote, red fox, snowshoe hare, white-tailed deer, barred owl, ruffed grouse, American woodcock, spotted turtle, and monarch butterfly.

**Learn more:**

[www.svtweb.org/CraneSwamp](http://www.svtweb.org/CraneSwamp)



## Trail Policies and Regulations

These policies apply to SVT properties on the map. Properties owned by other entities have their own posted policies.

The following are prohibited:

- Motorized vehicles
- Hunting (except by permission) or trapping
- Camping
- Bicycling
- Fires
- Disposing of trash or yard waste
- Cutting or removing plants



Dog walkers:

- Pick up and dispose of dog waste.
- Keep dogs on trails.
- Keep dogs out of ponds/streams/vernal pools.
- Put dogs on a leash when other hikers approach.

*See our full dog-walking policy on the trail head kiosk.*

## Directions

With mapping software, search for this address:  
40 Walker Street, Westborough, MA

To access from Sawink Farm, take I-495 to Exit 23B (Route 9W exit). Follow Route 9W for 1.1 miles to the Route 30 East (East Main Street) exit. Bear right onto East Main Street. Continue 1 mile to Walker Street. Turn left on Walker Street and continue down the hill to the SVT parking lot on the left.

## Support SVT

SVT protects open spaces and natural areas in 36 communities around the Sudbury, Assabet, and Concord Rivers. We care for thousands of acres of land that provide habitat for native wildlife, and we maintain more than 60 miles of trails for public enjoyment.

SVT relies upon the support of our members to be successful.

**Join Us! Help protect these lands forever.**

[www.svtweb.org](http://www.svtweb.org)

# Cedar Hill and Sawink Farm Trail Map



NORTHBOROUGH,  
MARLBOROUGH,  
WESTBOROUGH,  
SOUTHBOROUGH

*This map includes trails that cross properties owned and maintained by the Massachusetts Division of Fisheries and Wildlife, Department of Agricultural Resources, and Department of Conservation and Recreation.*



18 Wolbach Road  
Sudbury, MA 01776-2429  
978-443-5588

[www.svtweb.org](http://www.svtweb.org)

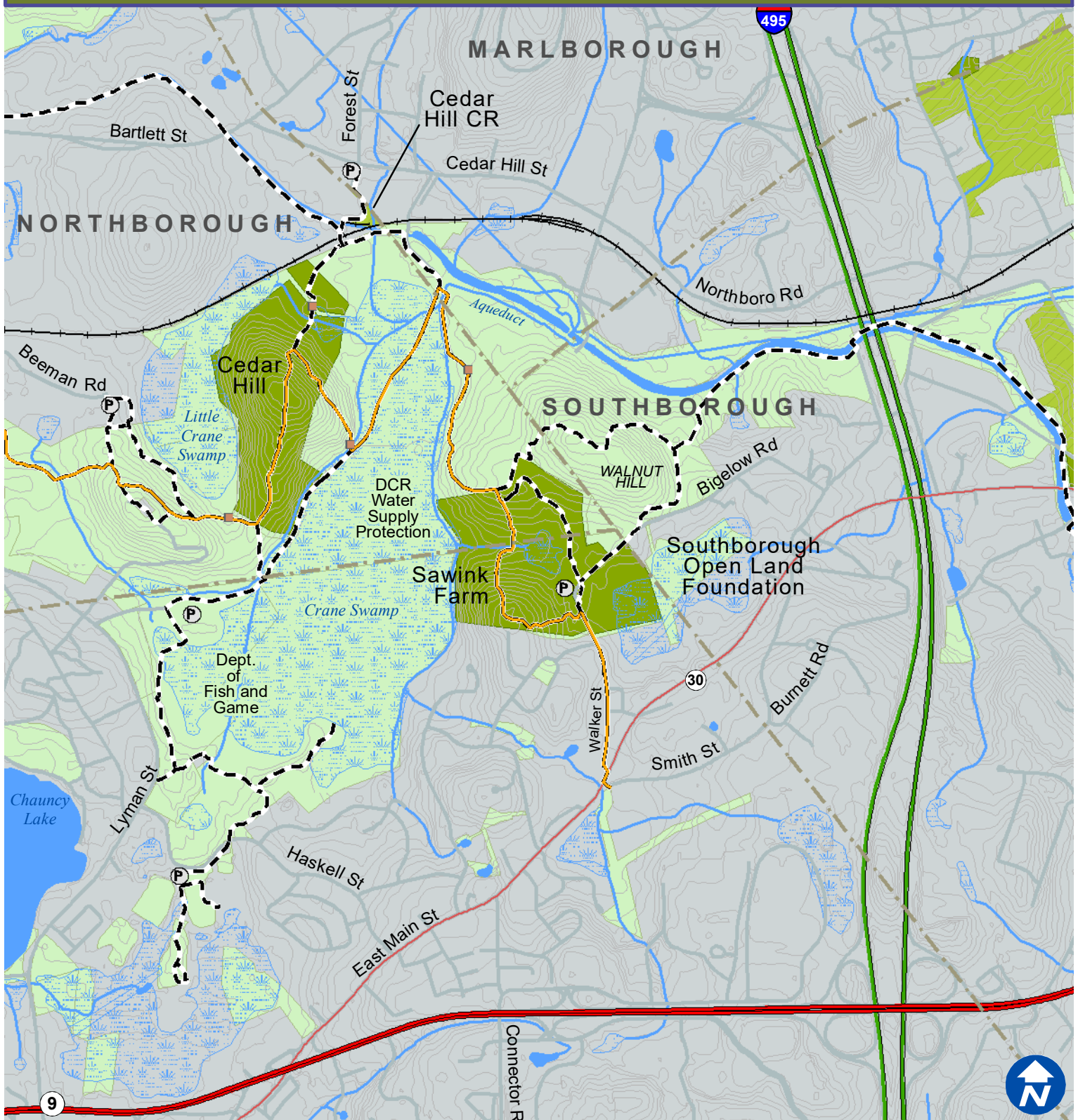
Facebook: @SudburyValleyTrust

Twitter: @TweetSVT

Instagram: sudbury\_valley\_trustees



# Cedar Hill and Sawink Farm



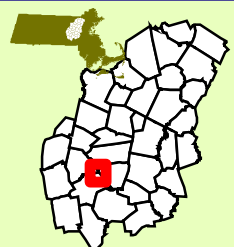
- Parking
  Trail
  Water Body
  Road
  SVT CR
- Bridge
  WCBT
  Wetland
  SVT
  Other Owner



Cedar Hill



Sawink



## Love open spaces? Support SVT!

Sudbury Valley Trustees is a nonprofit conservation organization that protects land for the benefit of people and wildlife. Help us keep these trails open for all to enjoy. **Join or Donate today! [www.svtweb.org](http://www.svtweb.org)**

Map produced by Sudbury Valley Trustees. Data Provided by Office of Geographic and Environmental Information (MassGIS), Commonwealth of Massachusetts Executive Office of Energy and Environmental Affairs. This Map should be used for reference only. Boundary lines are approximate.



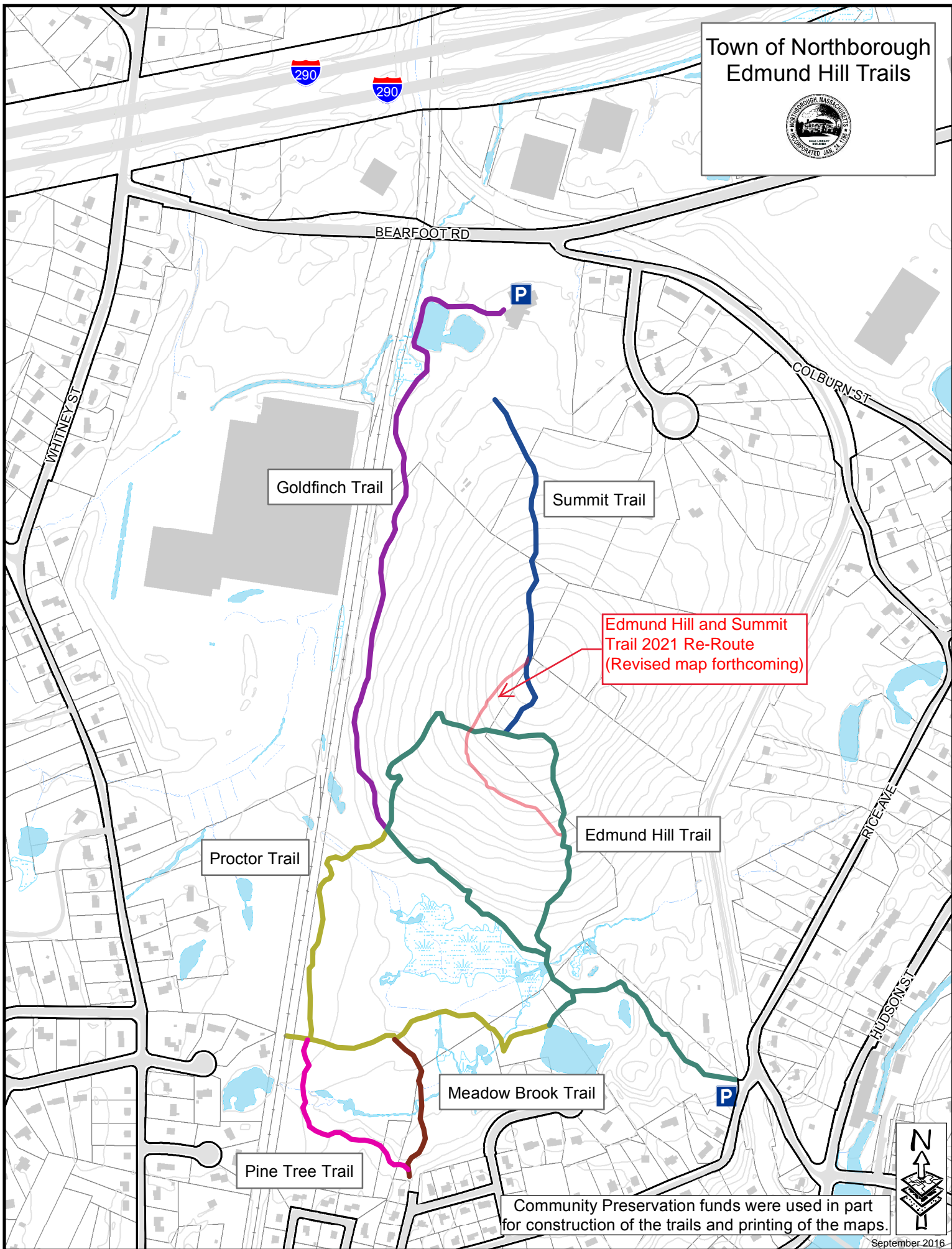
# Town of Northborough Cold Harbor Trail



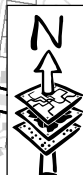
Community Preservation funds were used in part  
for construction of the trails and printing of the maps.



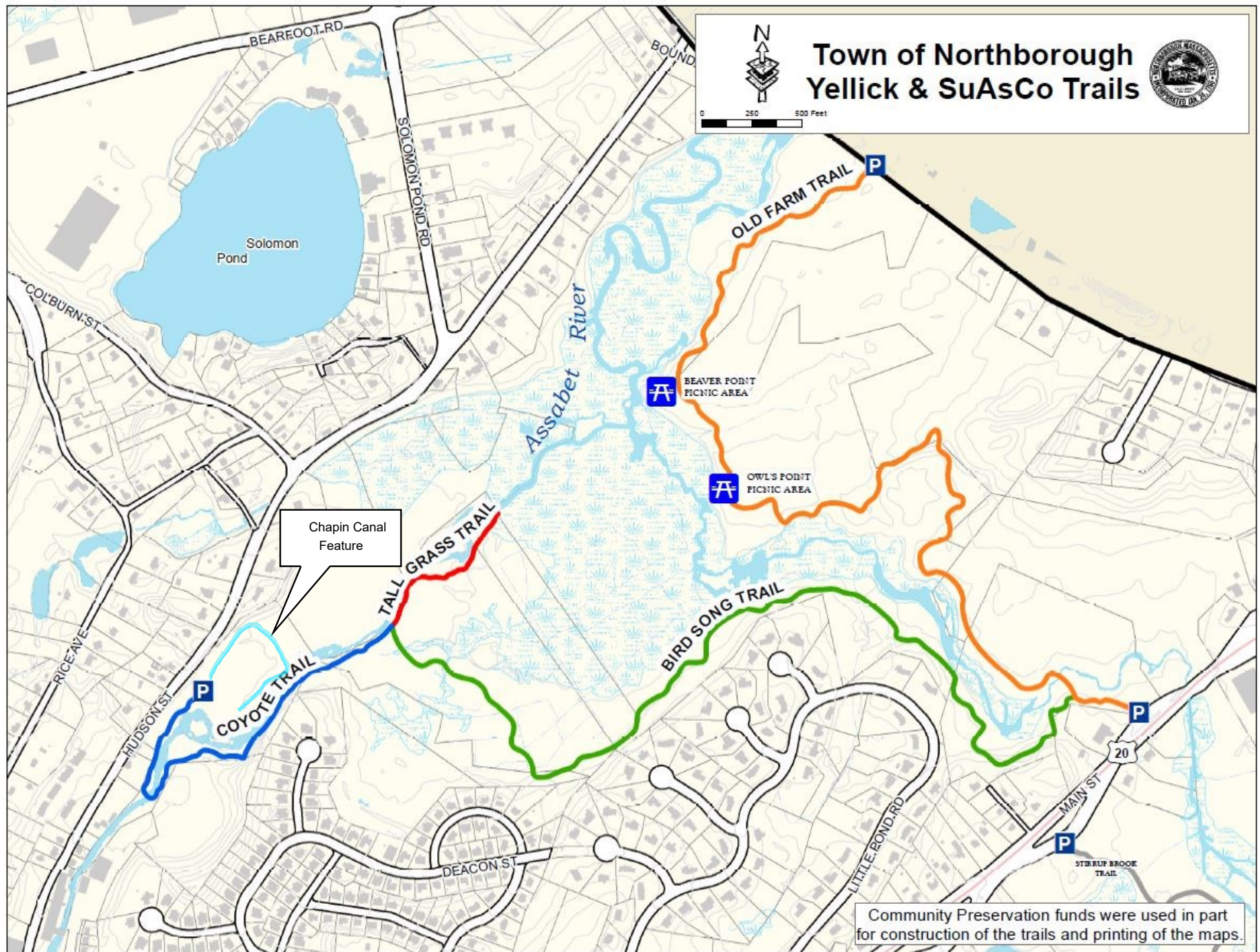
Town of Northborough  
Edmund Hill Trails



Community Preservation funds were used in part  
for construction of the trails and printing of the maps.







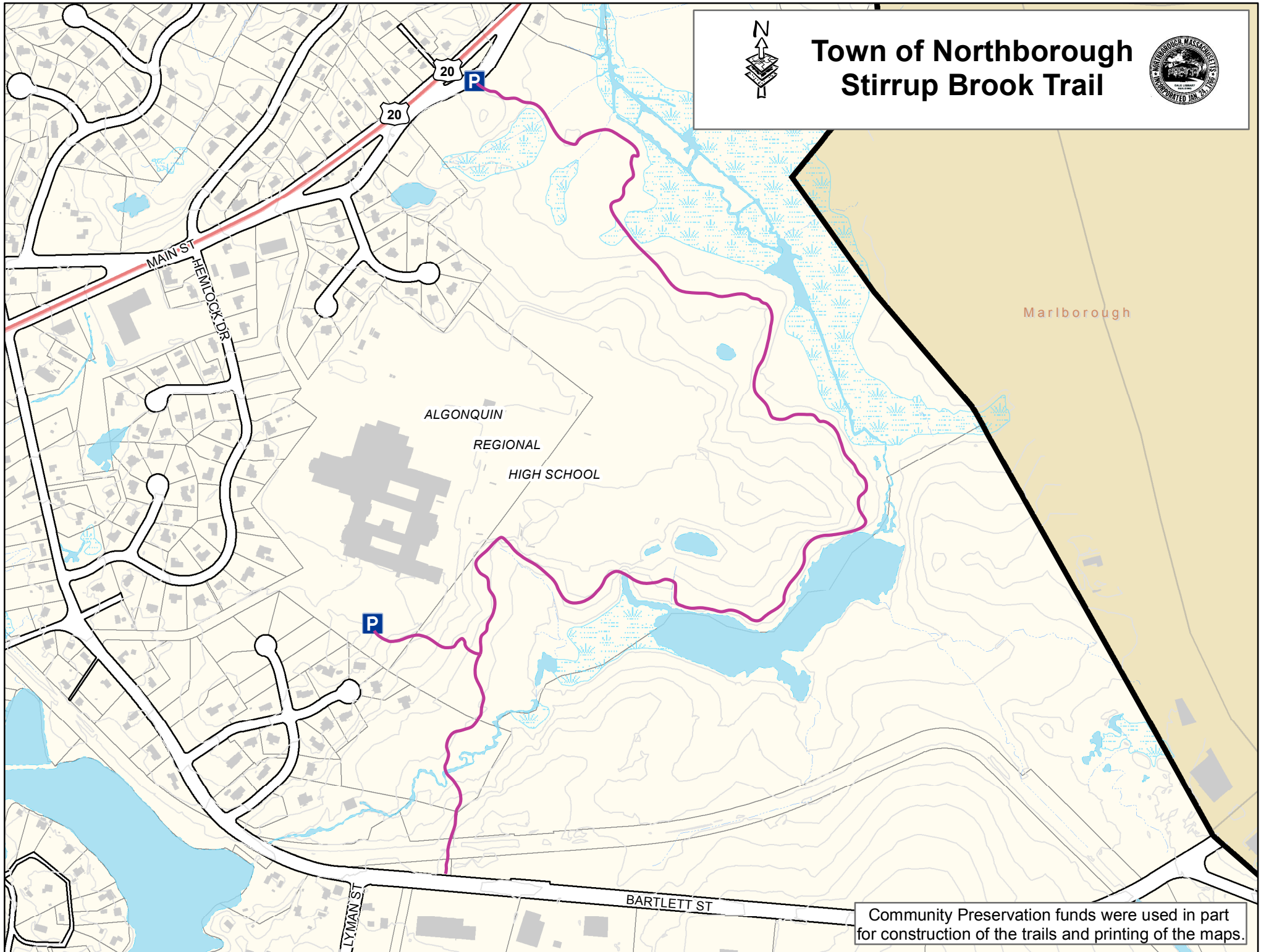
\*No through access to Hudson or Colburn Street. Please be respectful of abutting private property; no trespassing, please.

SEPT 2016





# Town of Northborough Stirrup Brook Trail

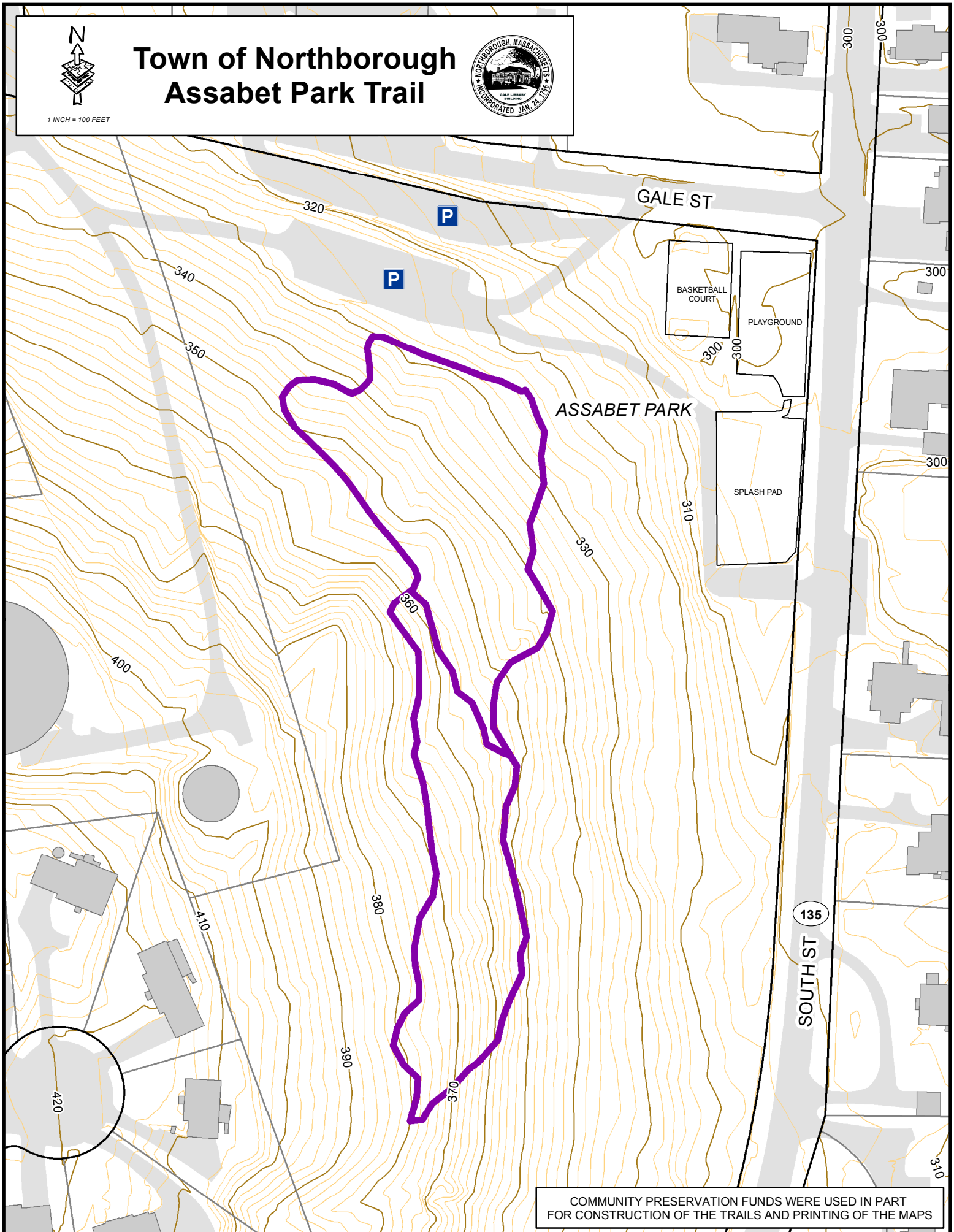


Community Preservation funds were used in part  
for construction of the trails and printing of the maps.



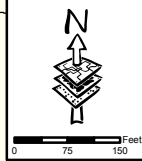
1 INCH = 100 FEET

# Town of Northborough Assabet Park Trail

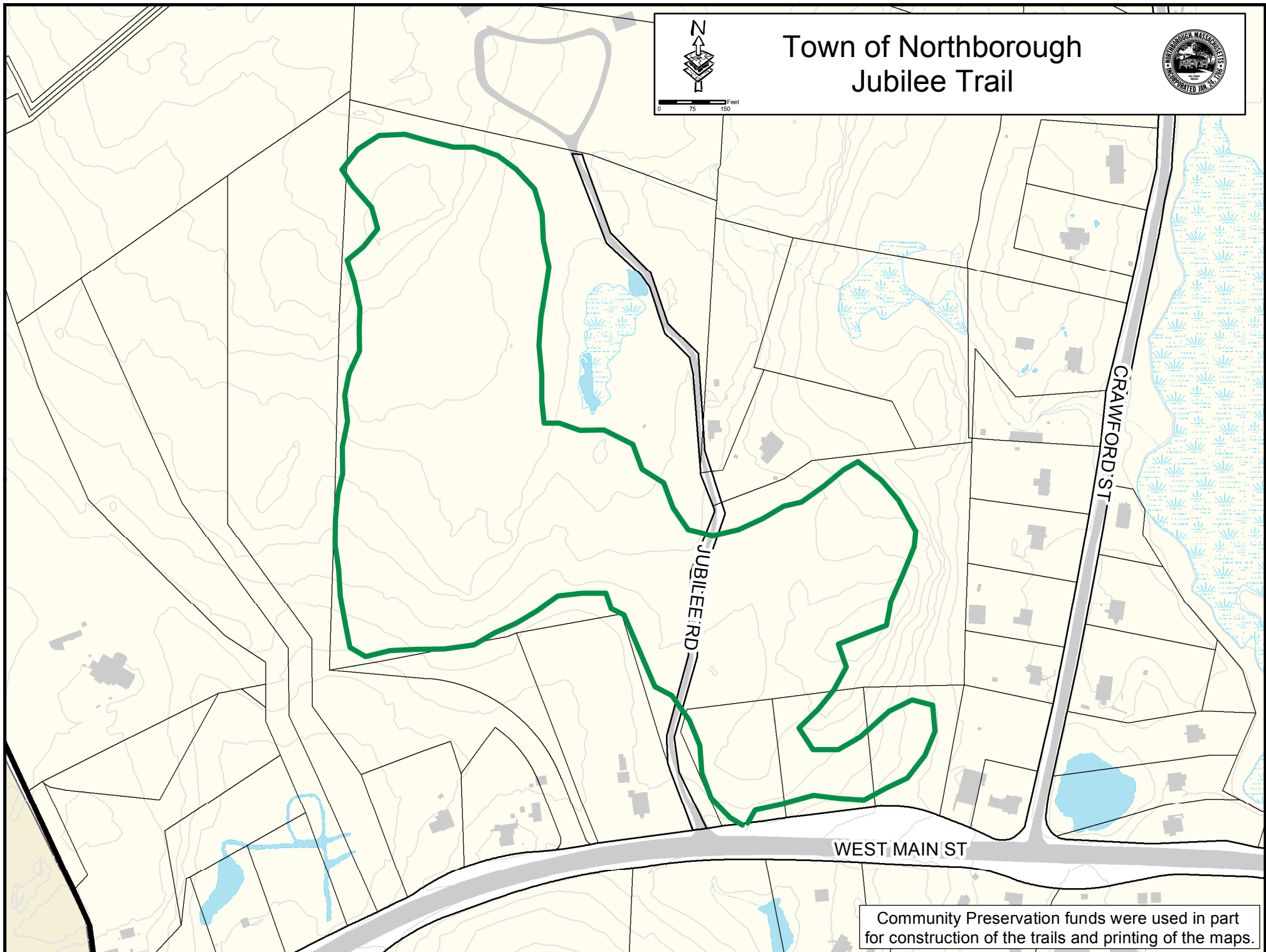


COMMUNITY PRESERVATION FUNDS WERE USED IN PART  
FOR CONSTRUCTION OF THE TRAILS AND PRINTING OF THE MAPS





# Town of Northborough Jubilee Trail

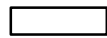


# Boroughs Loop Trail

## Section 1: 6.5 mi



1,000 Feet



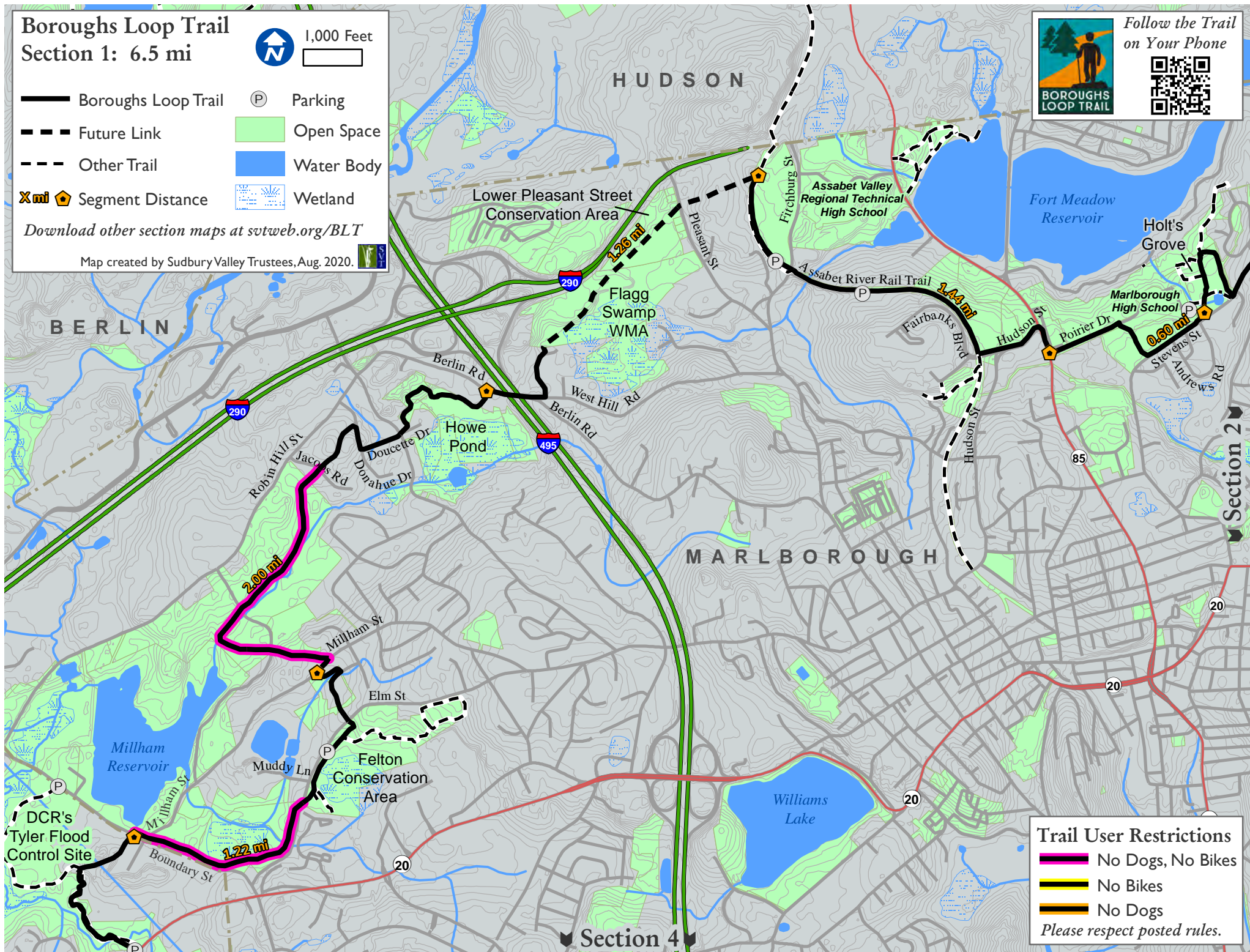
- Boroughs Loop Trail
- Future Link
- Other Trail
- mi Segment Distance
- Parking
- Open Space
- Water Body
- Wetland

Download other section maps at [svtweb.org/BLT](http://svtweb.org/BLT)

Map created by Sudbury Valley Trustees, Aug. 2020.



Follow the Trail  
on Your Phone

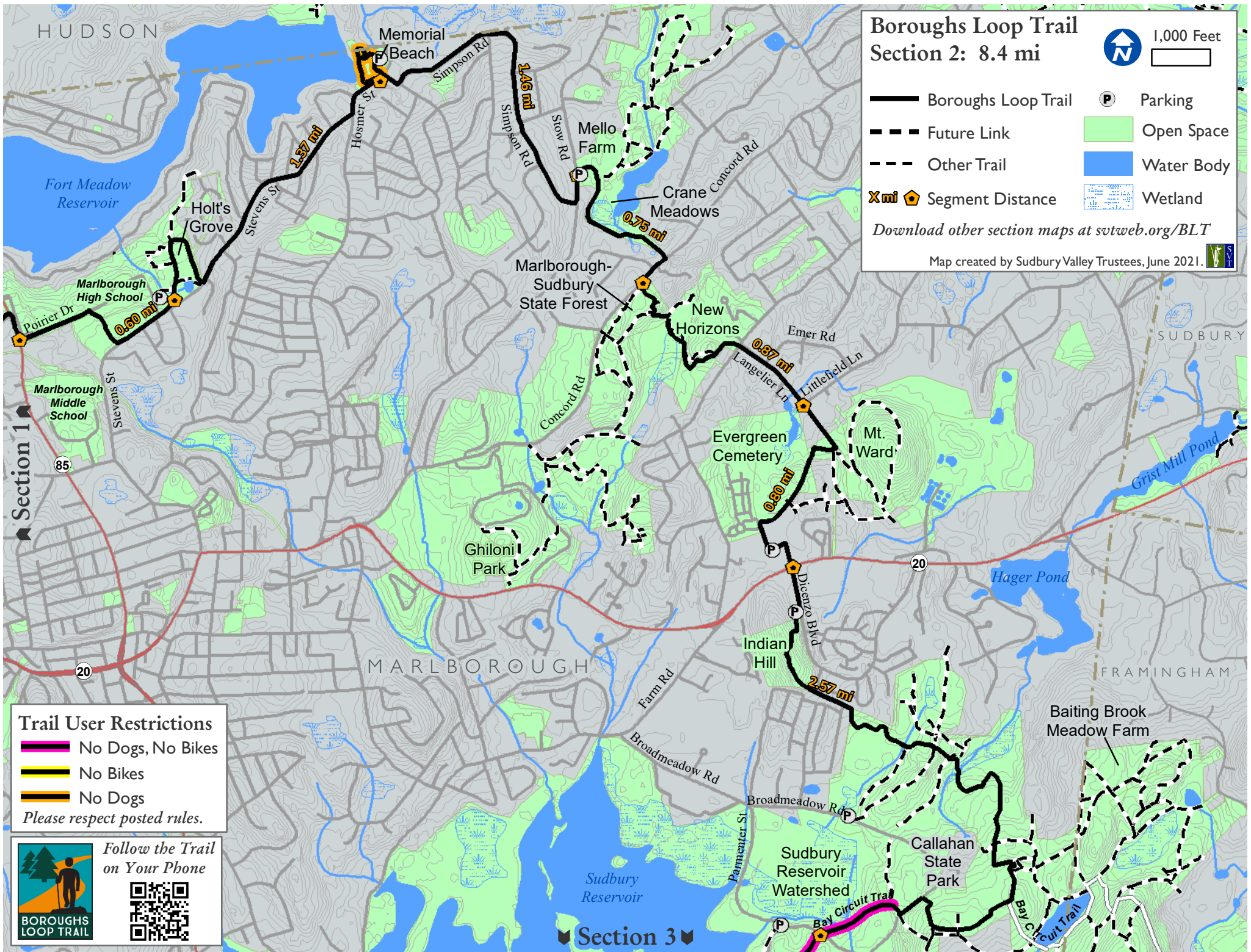


### Trail User Restrictions

- No Dogs, No Bikes
- No Bikes
- No Dogs

Please respect posted rules.





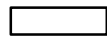


# Boroughs Loop Trail

## Section 3: 8.3 mi



1,000 Feet



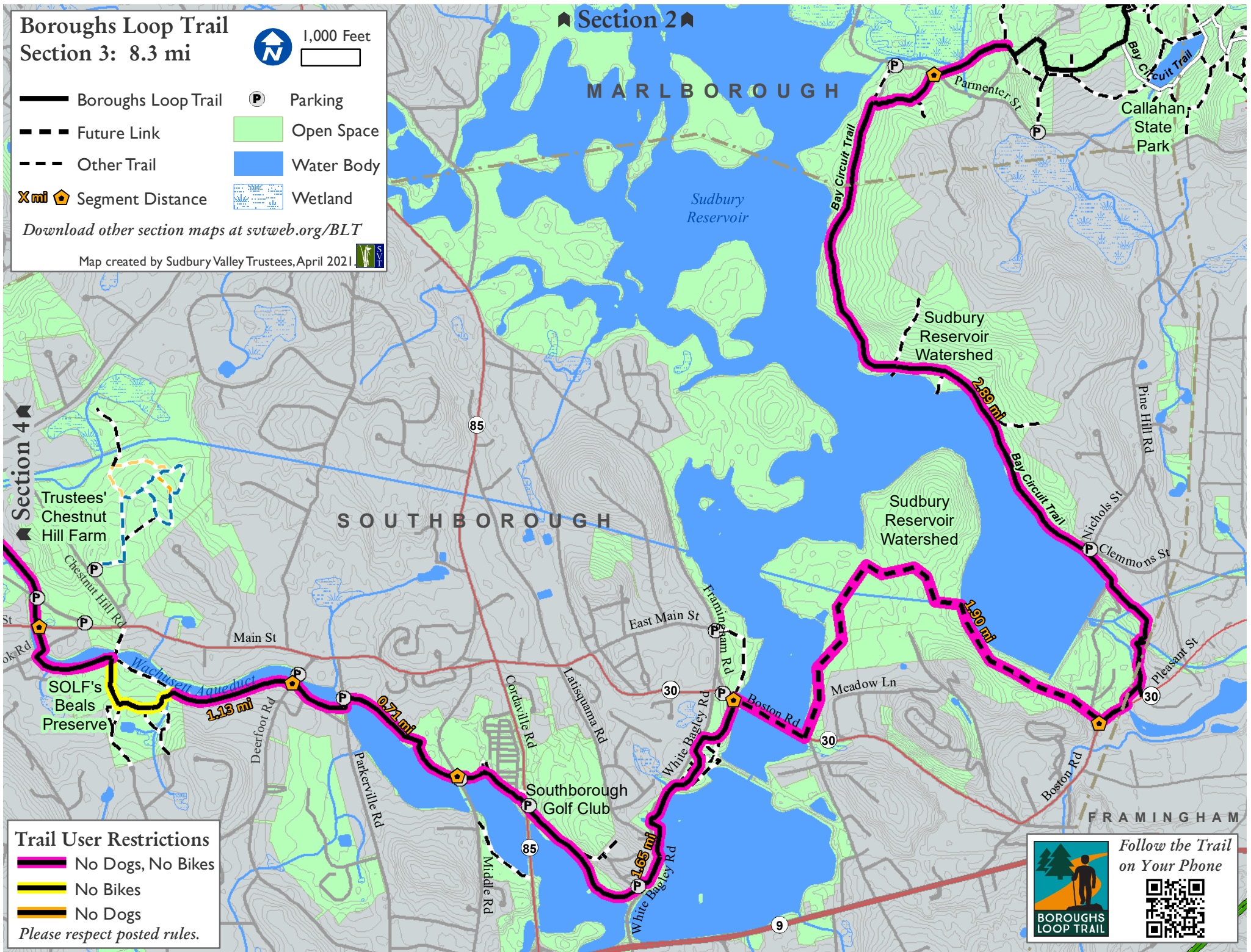
- Boroughs Loop Trail
- Future Link
- Other Trail
- mi Segment Distance
- Parking
- Open Space
- Water Body
- Wetland

Download other section maps at [svtweb.org/BLT](http://svtweb.org/BLT)

Map created by Sudbury Valley Trustees, April 2021



### Section 2



### Trail User Restrictions

- No Dogs, No Bikes
- No Bikes
- No Dogs

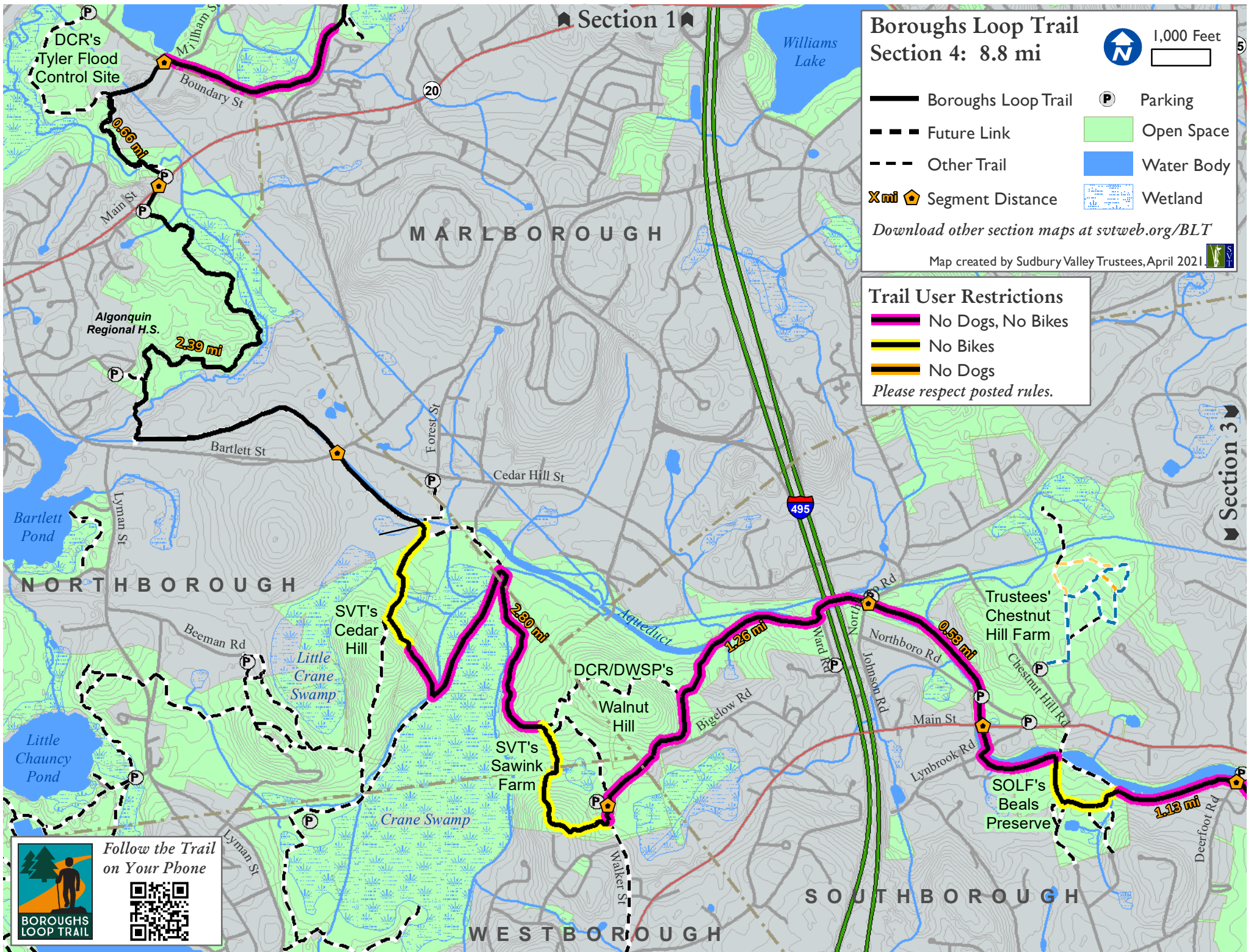
Please respect posted rules.



Follow the Trail  
on Your Phone







# Boroughs Loop Trail Section 4: 8.8 mi

1,000 Feet

- Boroughs Loop Trail
- Future Link
- Other Trail
- Segment Distance
- Parking
- Open Space
- Water Body
- Wetland

Download other section maps at [svtweb.org/BLT](http://svtweb.org/BLT)

Map created by Sudbury Valley Trustees, April 2021

## Trail User Restrictions

- No Dogs, No Bikes
- No Bikes
- No Dogs

Please respect posted rules.

Follow the Trail on Your Phone

