

Community Health Equity Survey:

Your story can shape our future health! The Community Health Equity Survey is still live! [Click here](#) to access the survey. The Greater Boroughs Partnership for Health will use these survey results to improve existing programs, make decisions about funding and resources, and support policies to improve health inequities.

Who should take this survey? This survey is intended for anyone over the age of 14 who lives in Massachusetts.

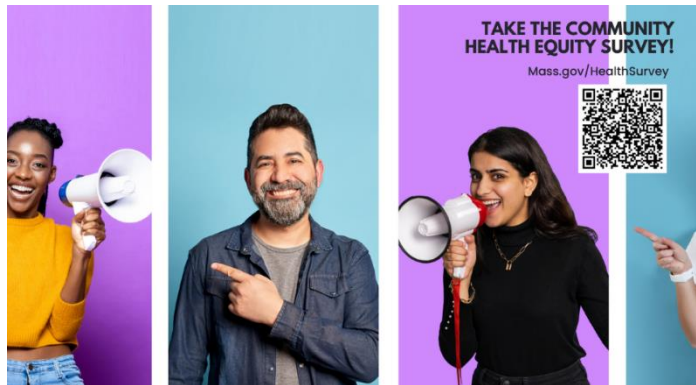
How to take the survey? You can take the survey online with a computer, phone, or tablet. It will take around 15-30 minutes to complete. You can choose to complete the survey in Arabic, Cape Verdean Creole, Chinese (simplified or traditional), English, Haitian Creole, Khmer, Portuguese, Russian, Spanish, and Vietnamese. Your participation in this survey is completely optional. If you choose to participate, your answers are anonymous and cannot be connected back to you. The survey will remain open through the end of October.

Take the survey online:

mass.gov/healthsurvey

For more information about the Community Health Equity Initiative and the survey, please visit:

www.mass.gov/chei.



Free COVID-19 tests:

As of September 25, 2023, residential households in the U.S. can order one set of four free at-home tests from [USPS.com](https://usps.com) again. Here's what you need to know about your order:

- Limit of one order per residential address
- One order includes four individual rapid antigen COVID-19 tests (COVIDTests.gov has [more details about at-home tests](#), including extended shelf life and updated expiration dates)
- Orders will ship free starting the week of October 2, 2023
- Tests may show “expired” dates on the box, but FDA has extended those dates; [see the full list of extended expiration dates.](#)

