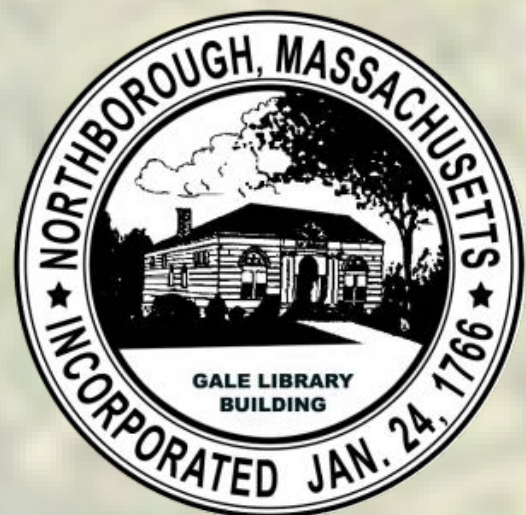


# NORTHBOROUGH DOG PARK

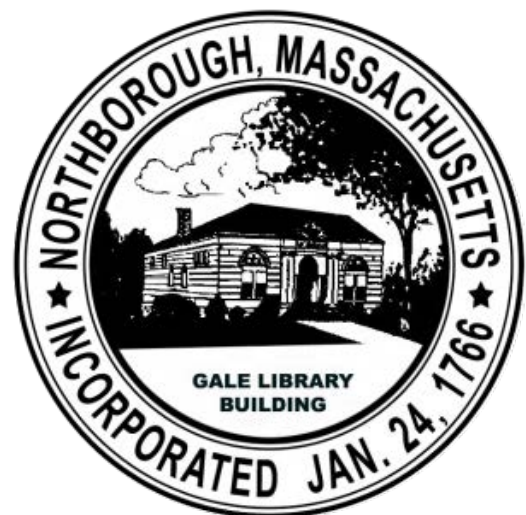
Community Meeting # 1

October 11, 2022



# AGENDA

- 1 **WELCOME**
- 2 **PROJECT TEAM**
- 3 **PROJECT SCHEDULE**
- 4 **PROJECT GOALS**
  - AMENITIES
  - PRECEDENT PROJECTS
- 5 **LOCATION OPTIONS**
  - LOCATION GOALS
  - LOCATION ANALYSIS
- 6 **COMMUNITY DISCUSSION**





# PROJECT TEAM

## Public Works & Recreation

Northborough, MA

---

● **Scott Charpentier**  
DPW Director  
Northborough MA

● **Allie Lane**  
Recreation Director  
Northborough MA

● **Laurie Connors**  
Planning Director  
Northborough MA

## Weston & Sampson

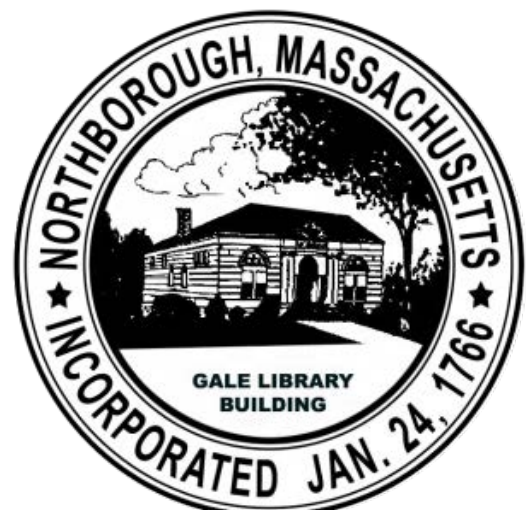
Landscape Architecture Team

---

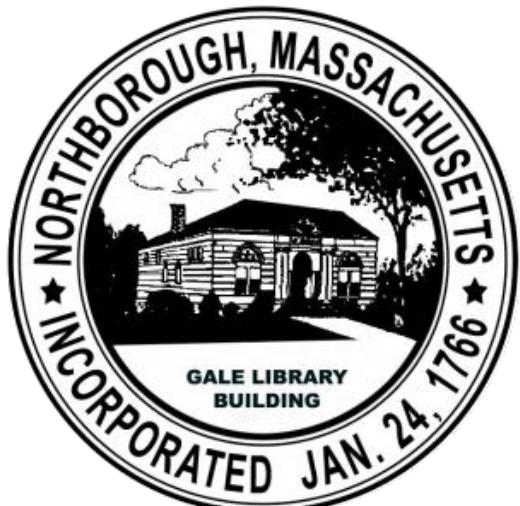
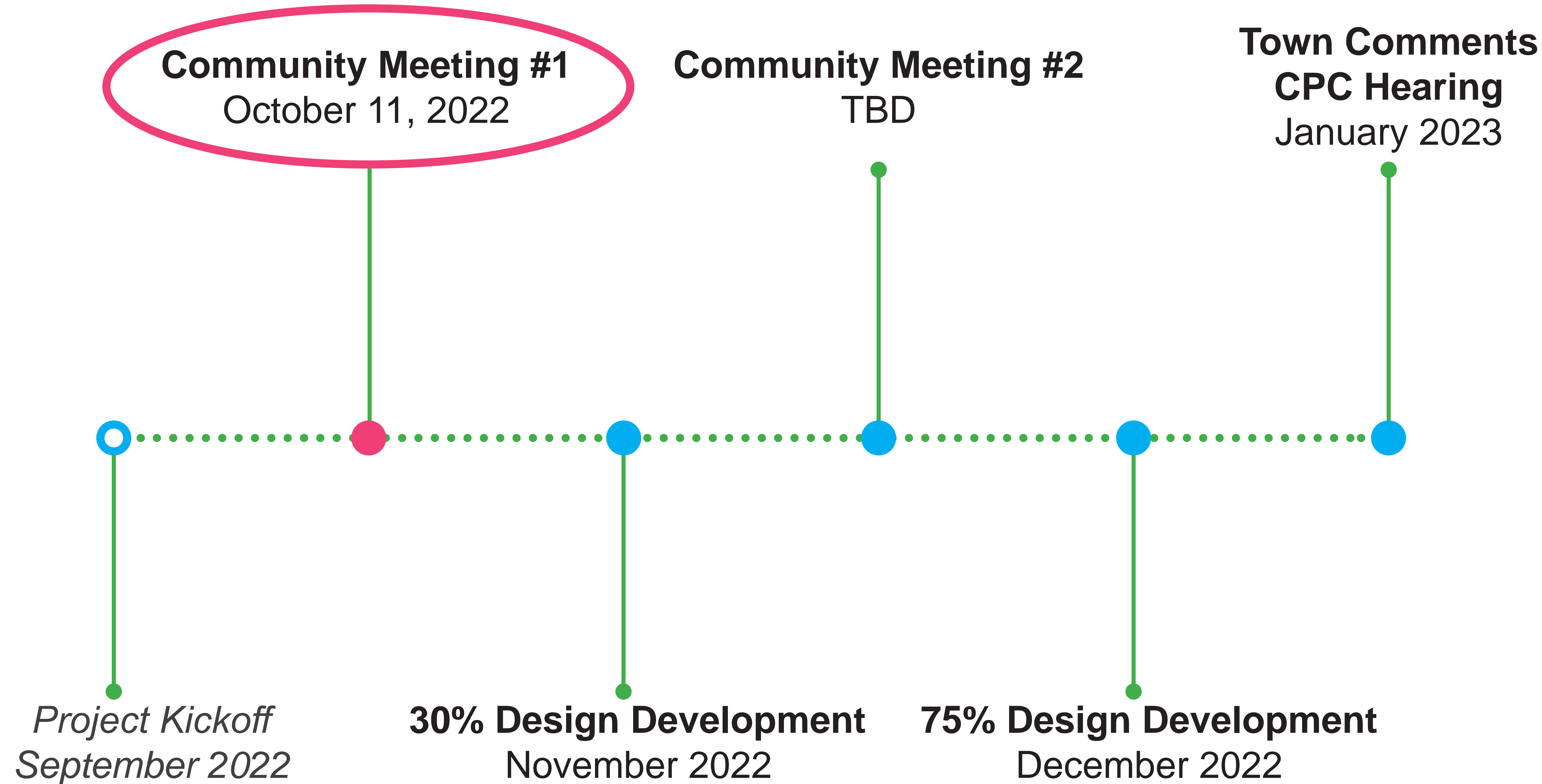
● **Mike Easler**  
Project Manager  
Weston & Sampson

● **Jeanette Cantu**  
Landscape Designer  
Weston & Sampson

● **Tongyi Zhang**  
Landscape Designer  
Weston & Sampson



# PROJECT SCHEDULE





# PROJECT GOALS



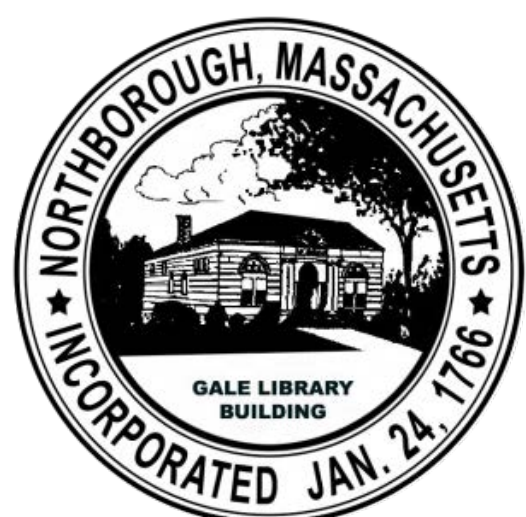
An off-leash facility for people and dogs



Increase the value and quality of life in the community



Community outreach has shown strong support for a dog park





# PRECEDENT DOG PARKS

## CHARLIE'S BARK PARK AT LAKE GEORGE, NY (2 acres)



SMALL DOG AREA



SYNTHETIC TURF PLAY AREA



LARGE DOG AREA & WALKING TRAILS



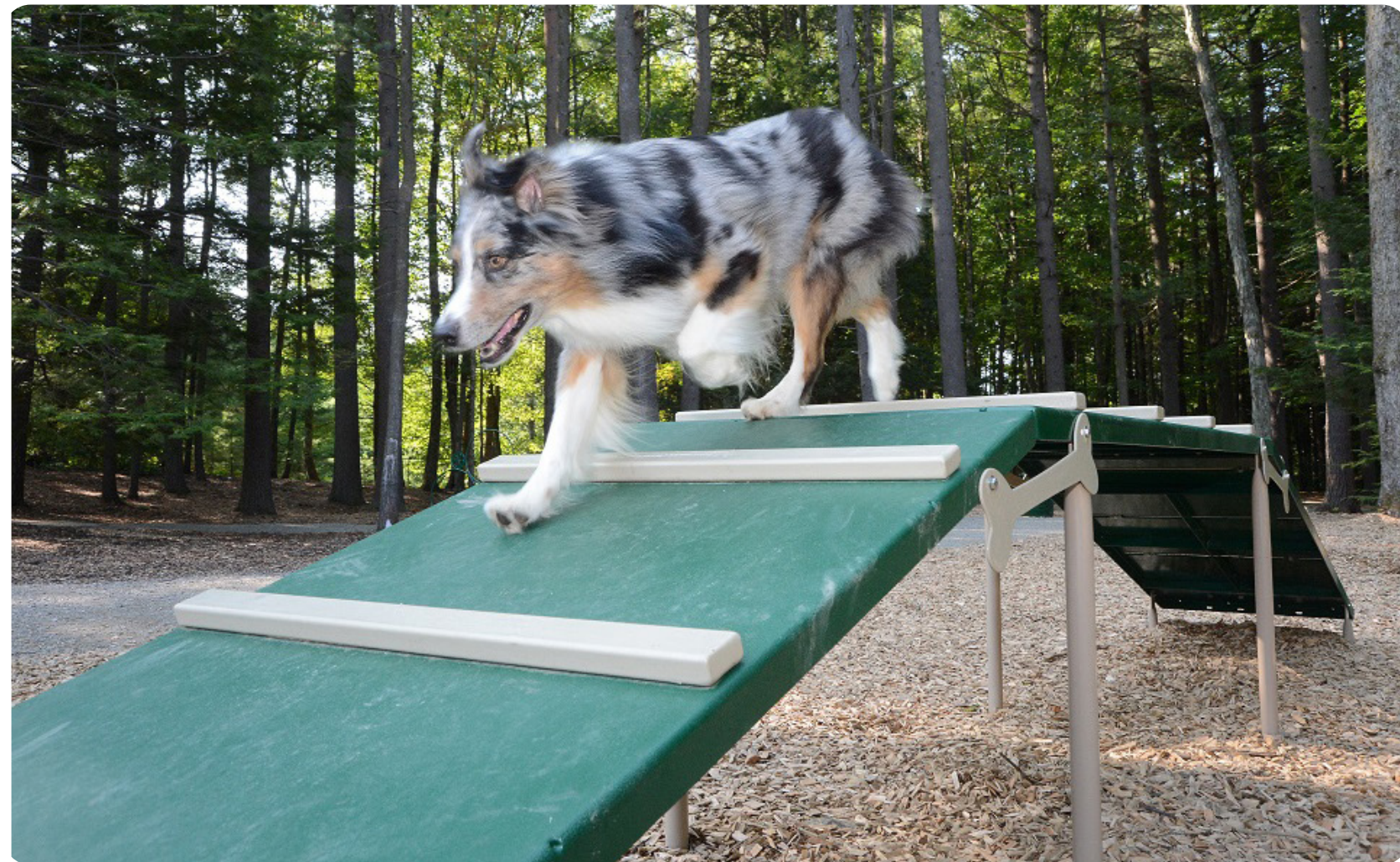
WATER PLAY



AGILITY PLAY | TIRE JUMP



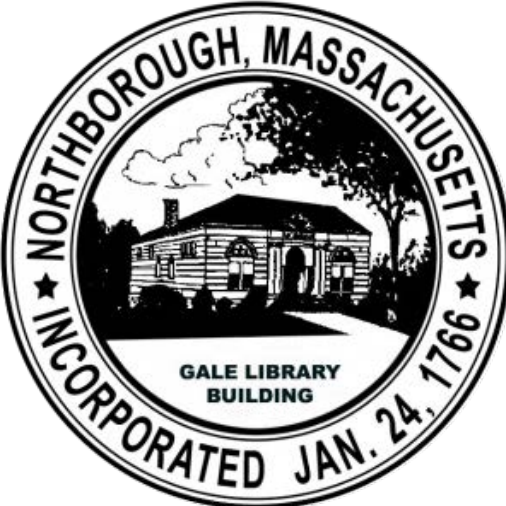
SITE PLAN



AGILITY PLAY | RAMP



AGILITY PLAY | OBSTACLE COURSE





# PRECEDENT DOG PARKS

## NEWTOWN DREAM DOG PARK, ATLANTA GA (1 acre)



SMALL DOG AREA



SYNTHETIC TURF PLAY AREA



SITE PLAN



LARGE DOG AREA



AGILITY PLAY | TIRE JUMP



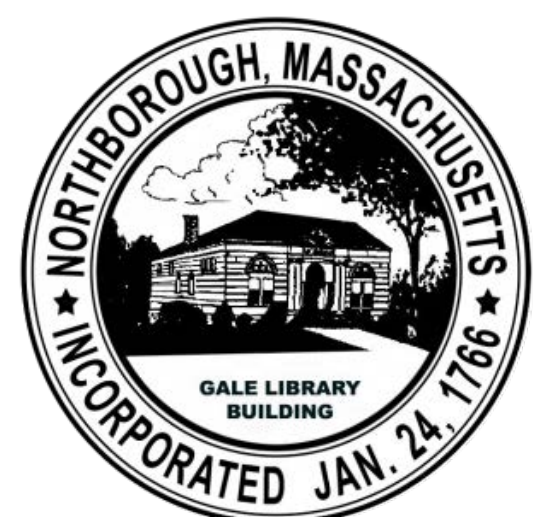
WATER PLAY



PAVILION & SEATING



DOG FOUNTAIN





# AMENITIES



LAWN & PLANTING



STONE DUST TRAILS



SYNTHETIC TURF AREAS



SHADE SHELTERS



FENCING AND SIGNAGE



PAVED SEATING AREAS



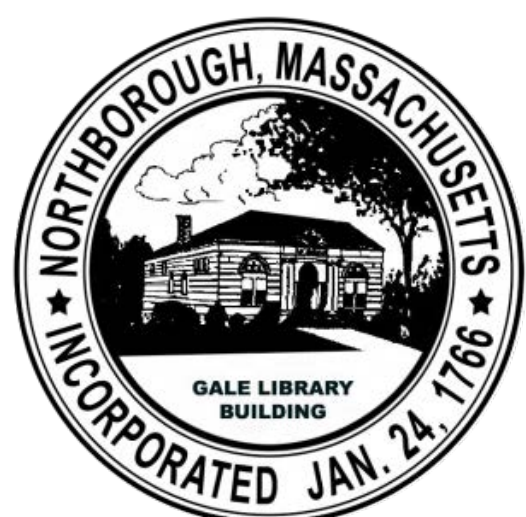
AGILITY PLAY EQUIPMENT



WOOD CHIPS & MULCH AREAS



WATER PLAY / SPRINKLERS





# LOCATION GOALS



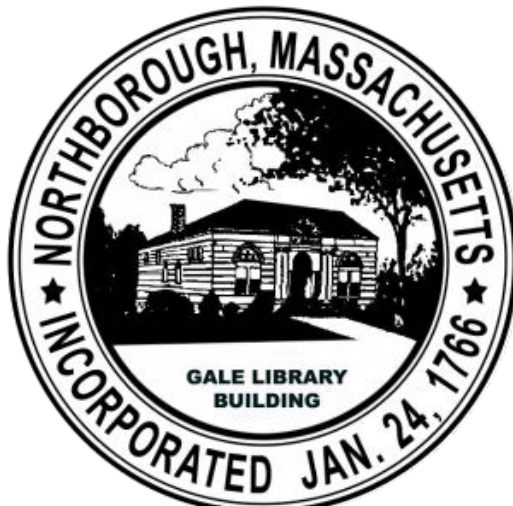
The Town has identified 4 potential locations for the dog park



These locations would provide town wide access

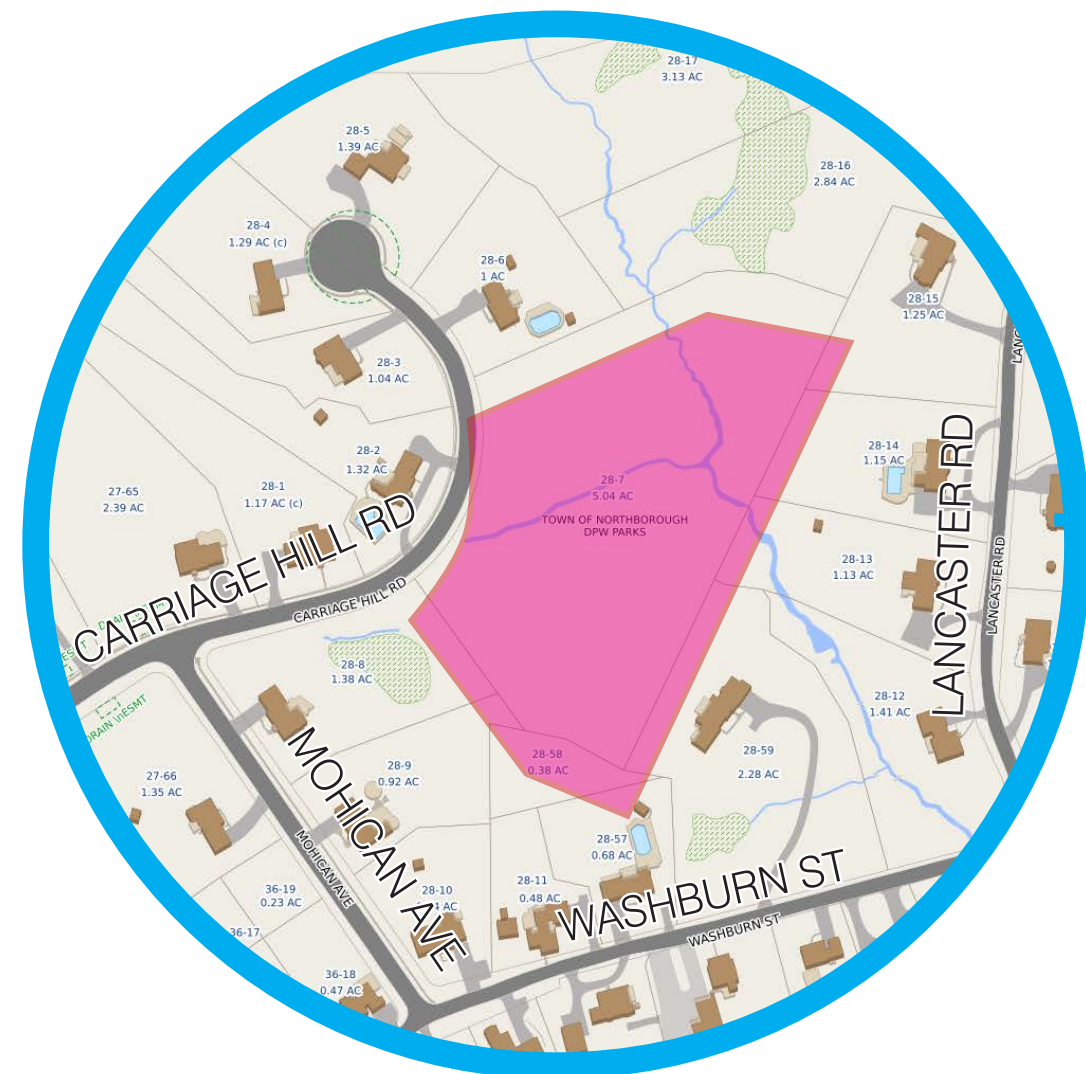


These locations provide opportunities for strategic dog park elements, such as parking, water, shade and buffer space



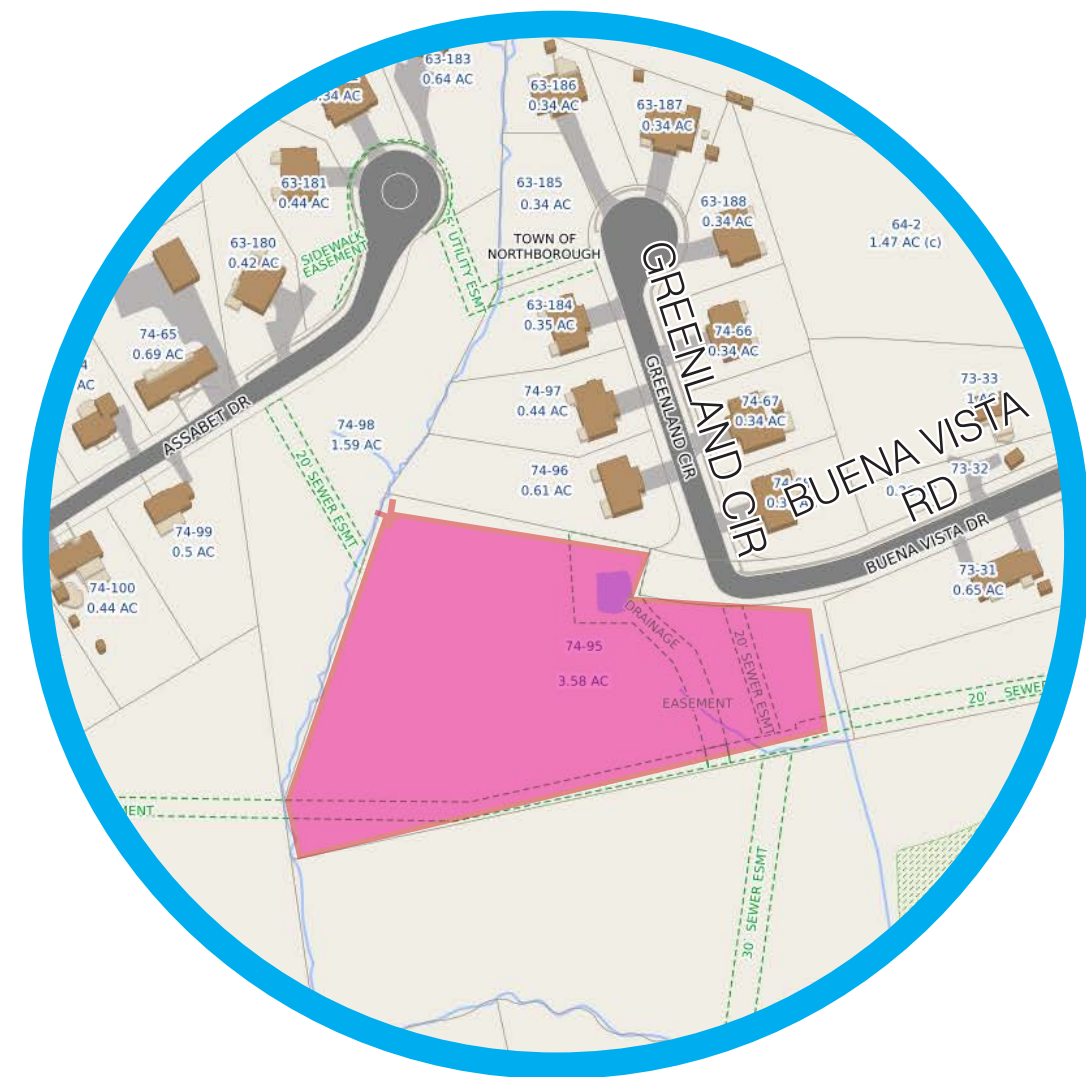


# POSSIBLE LOCATIONS



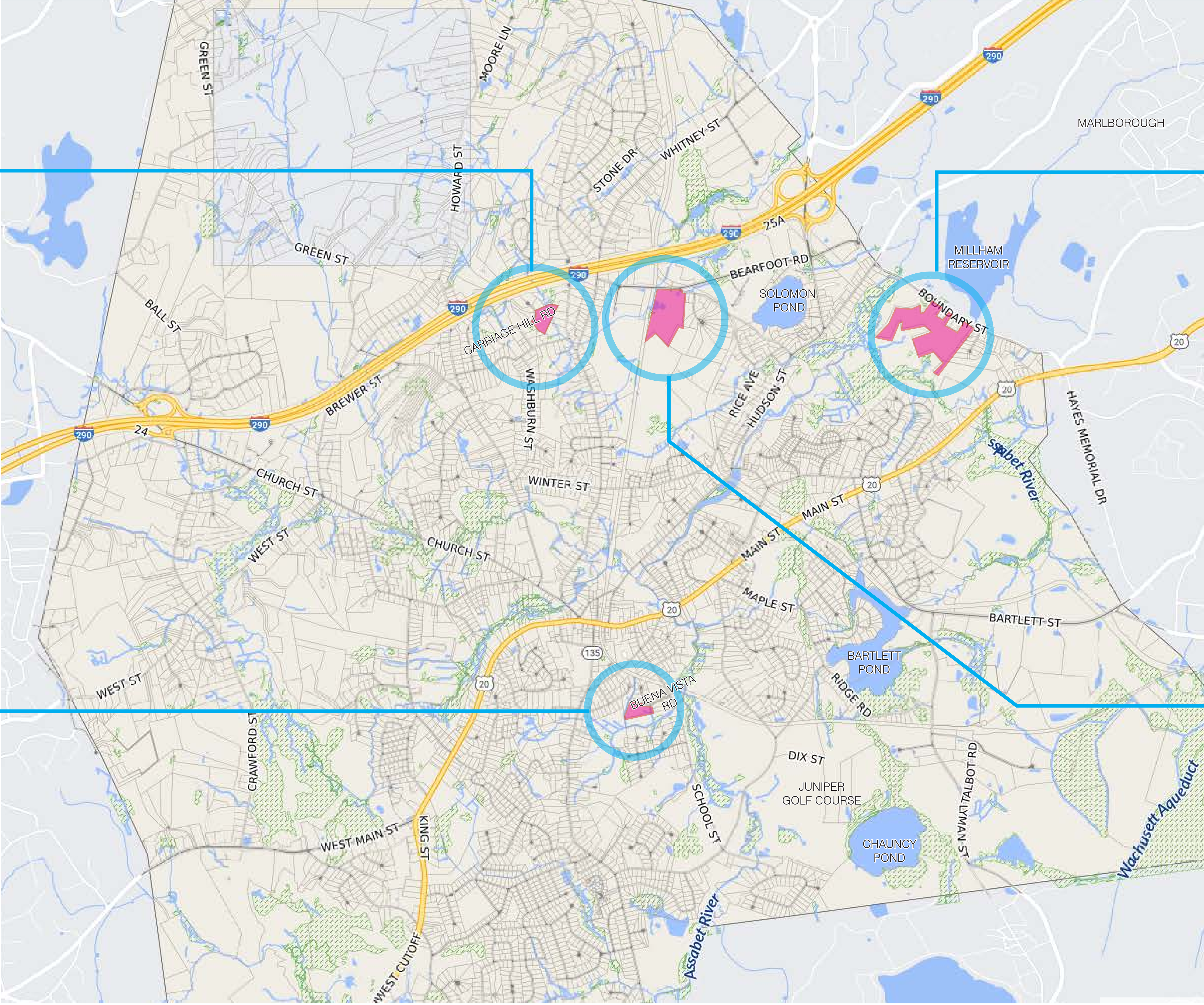
**CARRIAGE HILL RD**

**5 ACRES  
(2.2 ACRES AVAILABLE)**



**BUENA VISTA RD**

**3.7 ACRES  
(1 ACRE AVAILABLE)**



**BOUNDARY STREET**

**30 ACRES  
(8.6 ACRES AVAILABLE)**



**BEARFOOT RD**

**17 ACRES  
(2 ACRES AVAILABLE)**





# CARRIAGE HILL RD

5 ACRES  
(2.2 ACRES AVAILABLE)

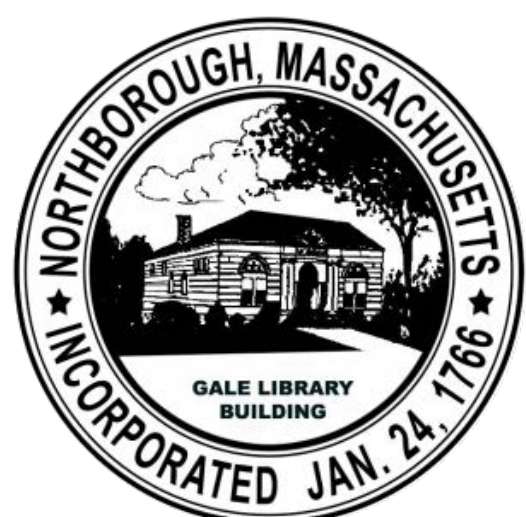


## PROS

- SHADE: FULLY FORESTED
- UTILITY CONNECTIONS POSSIBLE FROM STREET

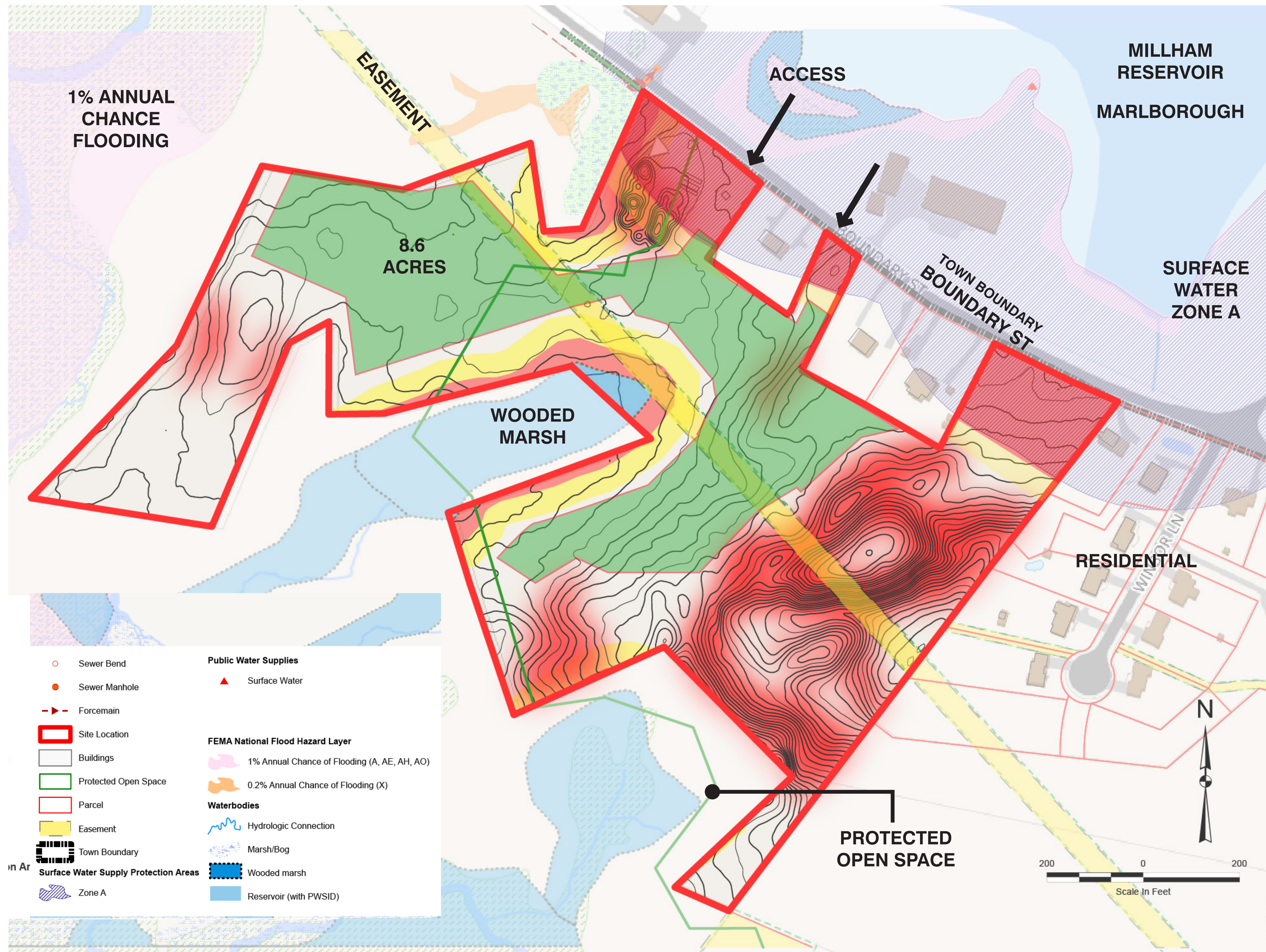
## CONS

- RESIDENTIAL ABUTTERS
- LIMITED VEHICULAR ACCESS
- WETLANDS RESOURCES AND BUFFERS LIMIT CONSTRUCTION IN SOME AREAS
- STEEP SLOPES LIMIT SOME DEVELOPMENT
- RESIDENTIAL ACCESS ROAD

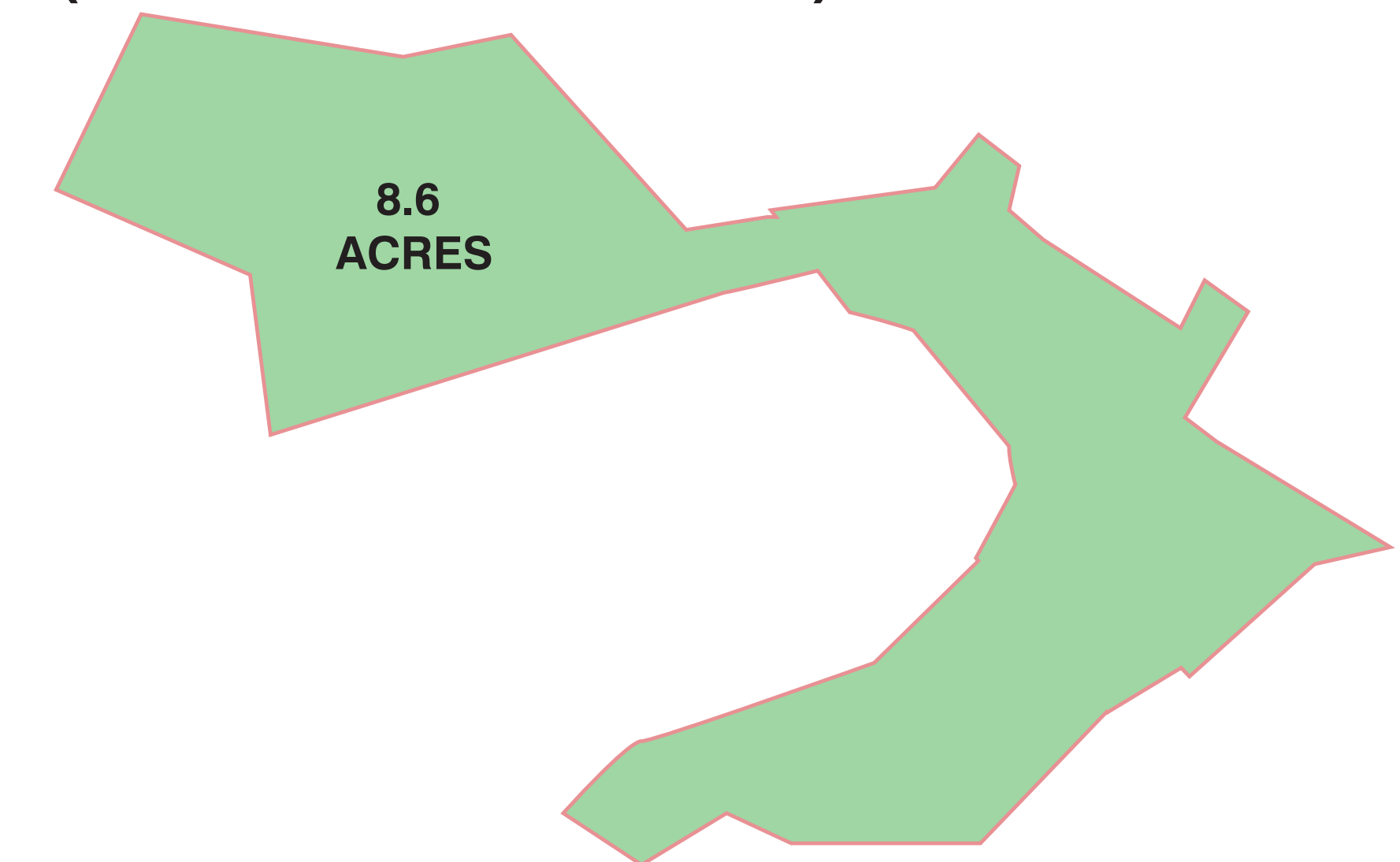




# BOUNDARY STREET



30 ACRES  
(8.6 ACRES AVAILABLE)

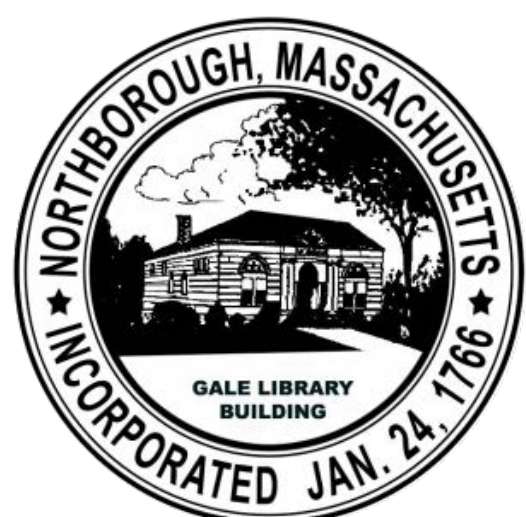


## PROS

- SHADE: FULLY FORESTED
- PROTECTED OPEN SPACE
- UTILITY CONNECTIONS POSSIBLE FROM STREET
- SLOPES PROVIDE RESIDENTIAL BUFFER
- ABOVE FLOOD ZONES
- OFF LEASH HIKING TRAIL OPPORTUNITIES

## CONS

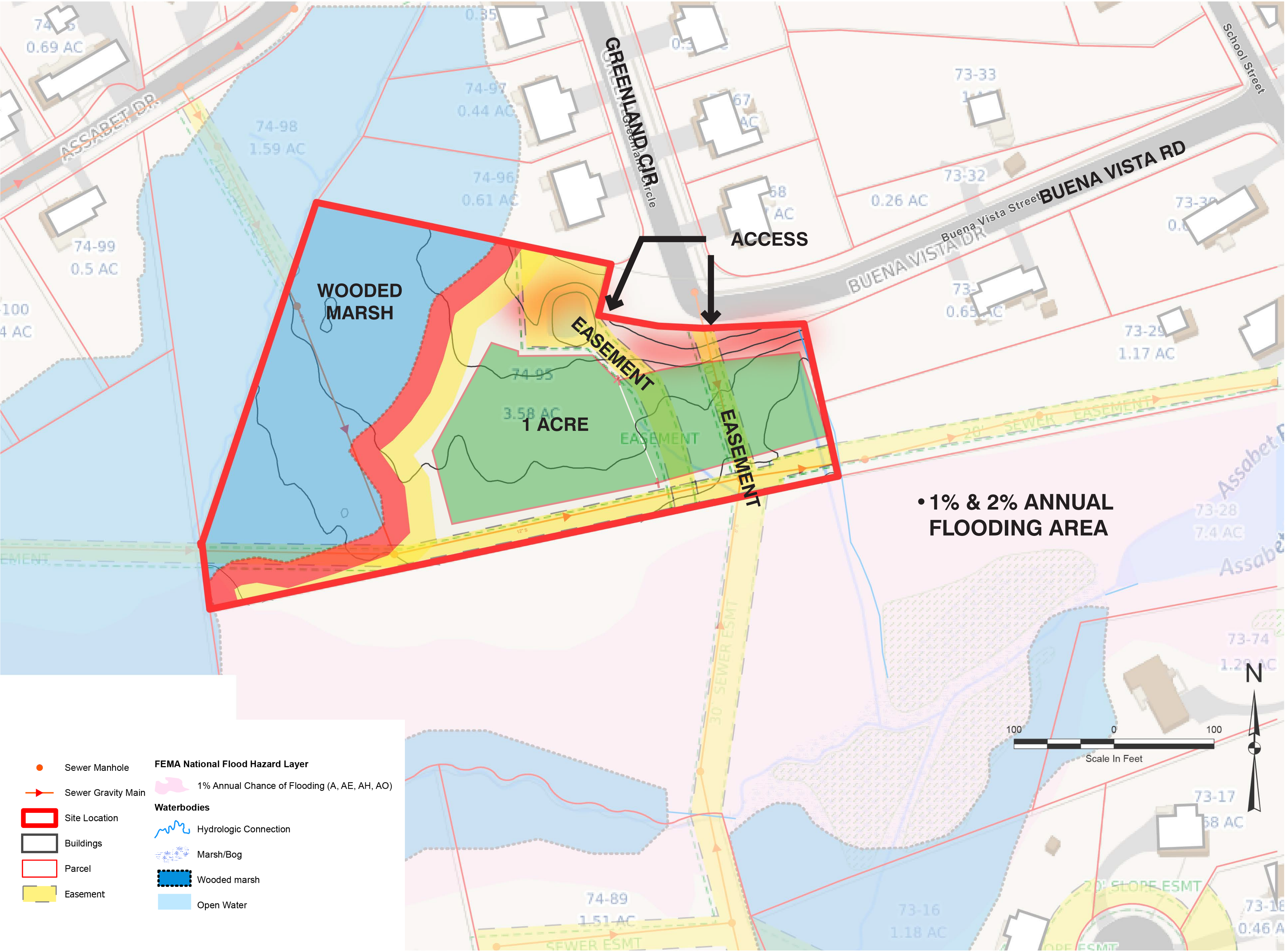
- STEEP SLOPES TO THE EAST
- WETLANDS RESOURCES AND BUFFERS LIMIT CONSTRUCTION IN SOME AREAS
- EASEMENT LIMITS CONSTRUCTION OPTIONS IN SOME AREAS





# BUENA VISTA RD

3.7 ACRES  
(1 ACRE AVAILABLE)



## PROS

- SHADE: FULLY FORESTED
- MOSTLY FLAT AREAS
- UTILITY CONNECTIONS POSSIBLE FROM STREET

## CONS

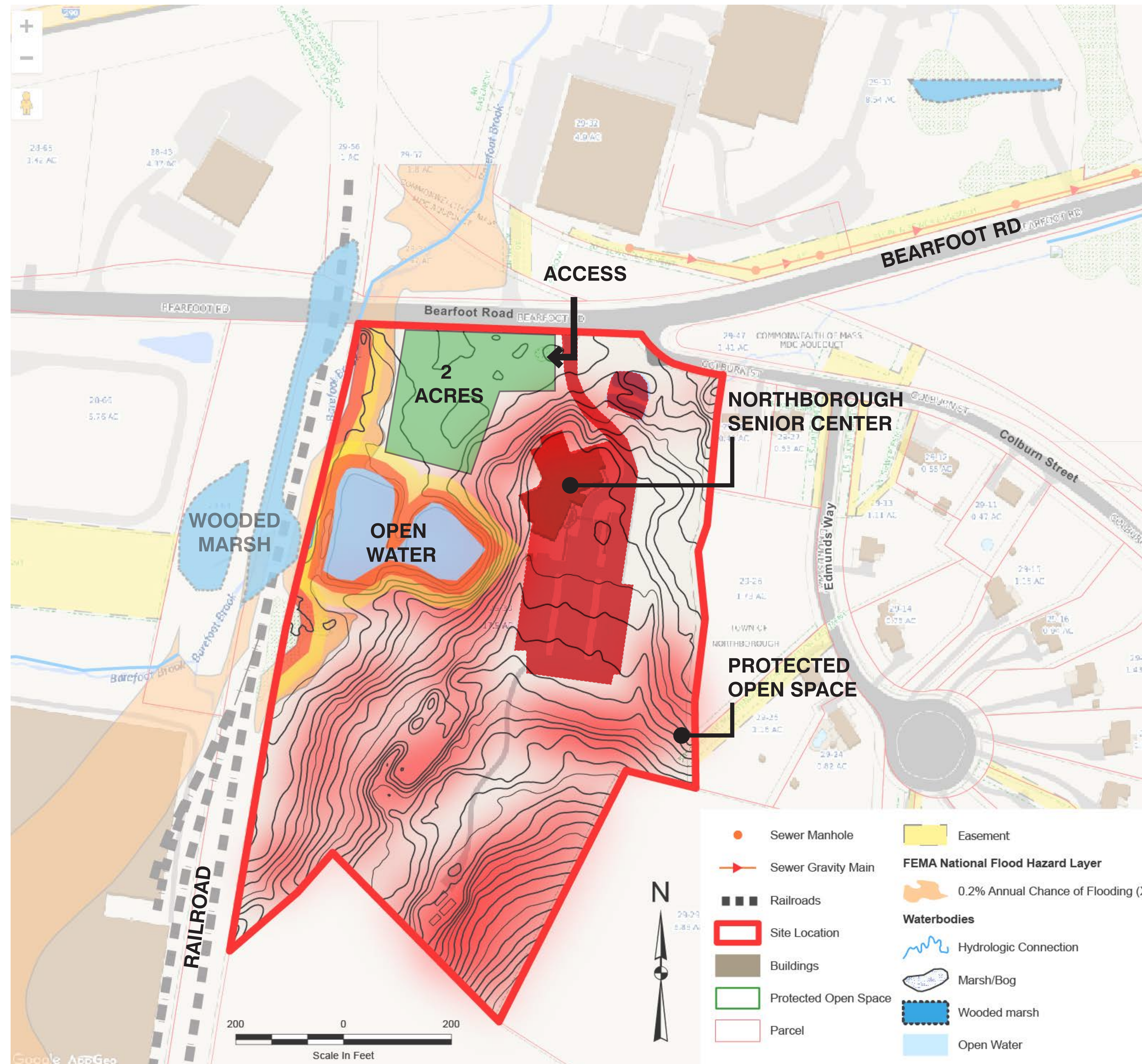
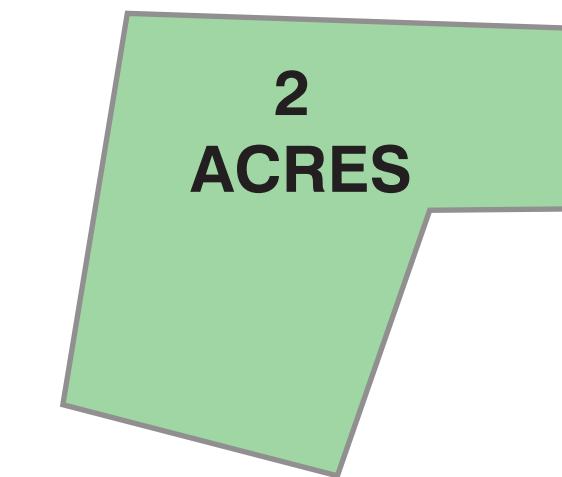
- LIMITED SIZE
- RESIDENTIAL ABUTTERS
- LIMITED VEHICULAR AND PEDESTRIAN ACCESS
- WETLANDS RESOURCES AND BUFFERS LIMIT CONSTRUCTION IN SOME AREAS
- EASEMENTS LIMIT CONSTRUCTION OPTIONS
- WET SOILS
- ACCESS ROAD IS RESIDENTIAL





# BEARFOOT RD/SENIOR CENTER

17 ACRES  
(2 ACRES AVAILABLE)

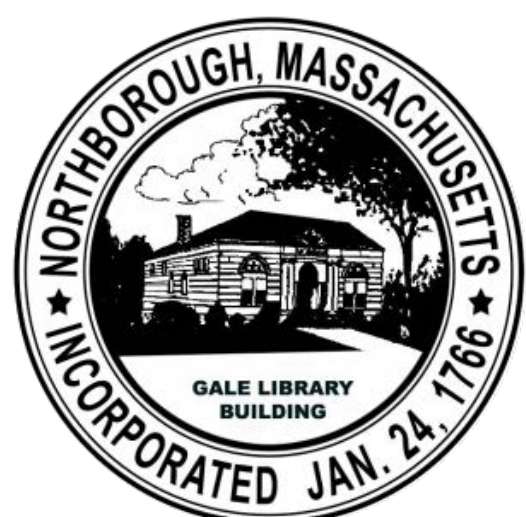


## PROS

- SHADE: FULLY FORESTED
- PROTECTED OPEN SPACE
- WATER ACCESS: STREET AND BUILDING UTILITIES

## CONS

- ADJACENT TO NORTHBOROUGH SENIOR CENTER
- CHANCE OF FLOODING ALONG EAST PERIMETER
- WETLANDS RESOURCES AND BUFFERS LIMIT CONSTRUCTION IN SOME AREAS
- STEEP SLOPES THROUGHOUT THE SITE





# THANK YOU!

We will be scheduling a second virtual community meeting  
in the following weeks

Please make sure to leave your contact information to receive  
upcoming meeting invitations and project information

**For questions please contact:**

**Scott Charpentier**

DPW Director

Northborough MA

[scharpentier@town.northborough.ma.us](mailto:scharpentier@town.northborough.ma.us)

508-393-5030

**Allie Lane**

Recreation Director

Northborough MA

[alane@town.northborough.ma.us](mailto:alane@town.northborough.ma.us)

508-393-5034

**Laurie Connors**

Planning Director

Northborough MA

[lconnors@town.northborough.ma.us](mailto:lconnors@town.northborough.ma.us)

508-393-5019

