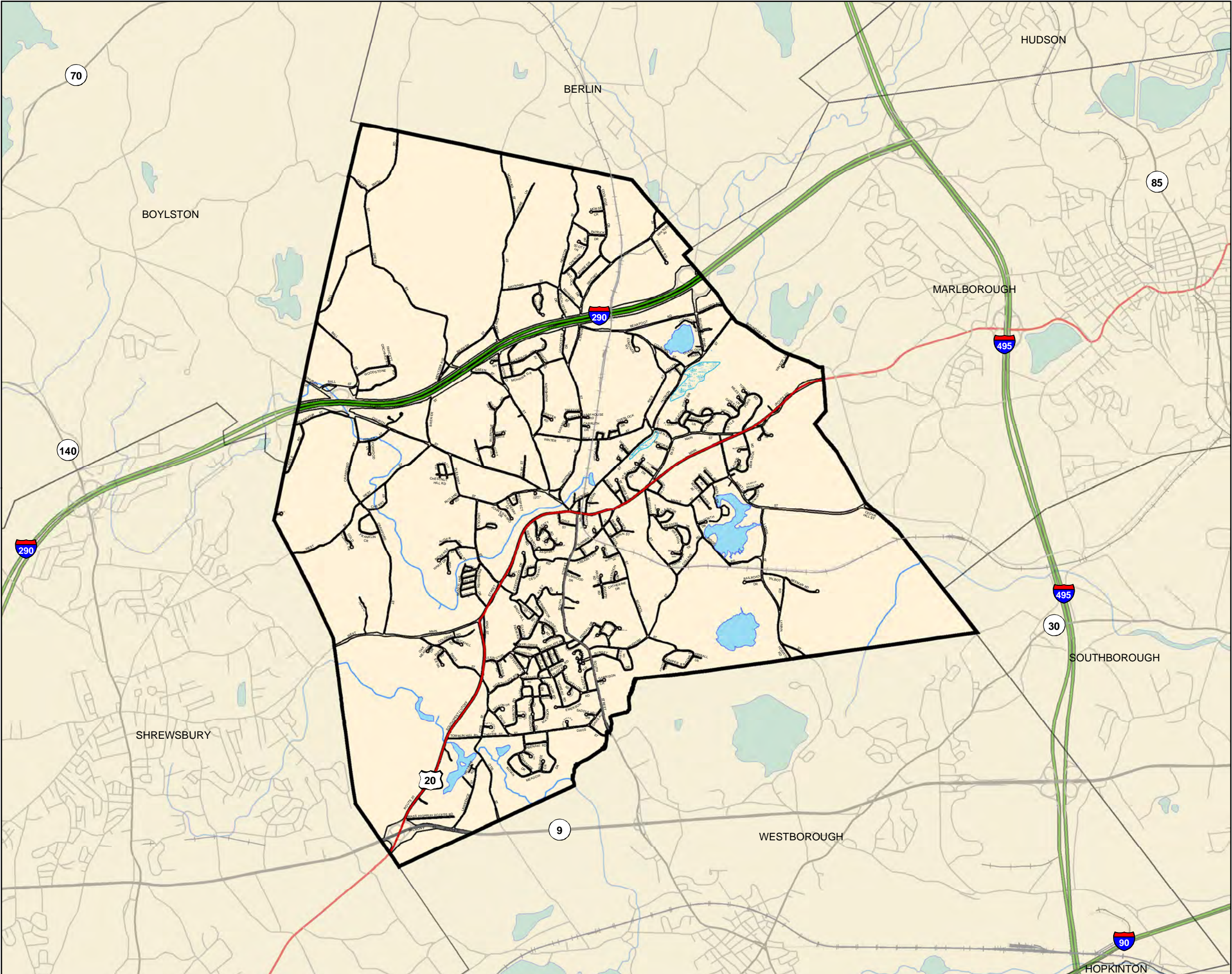


MAPS

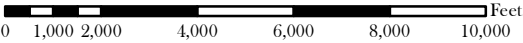
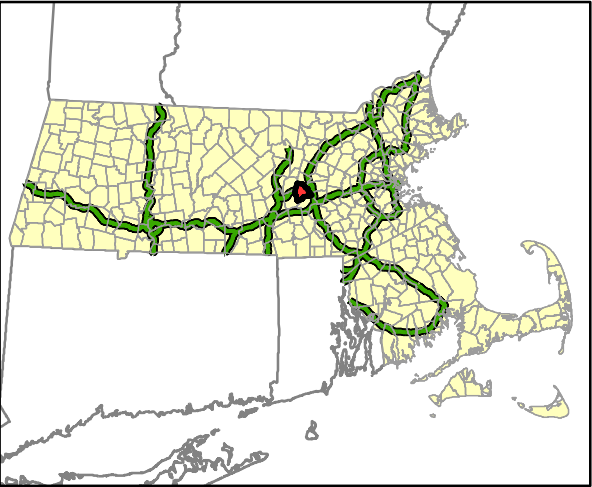
Map 1	Regional Context
Map 2	Infrastructure
Map 3	2005 Land Use
Map 4	2009 Zoning Districts
Map 5	Groundwater Protection Overlay District
Map 6	Surficial Geology
Map 7	Topography
Map 8	Water Resources - Watersheds, Wetlands, and Surface Water
Map 9	Water Resources – Flood Plain, Water Protection Areas
Map 10	Unique Environments
Map 11	Historic, Cultural and Scenic
Map 12	Open Space
Map 13	Action Plan Map



Town of Northborough
Open Space Plan



Map 1
Regional Context Map



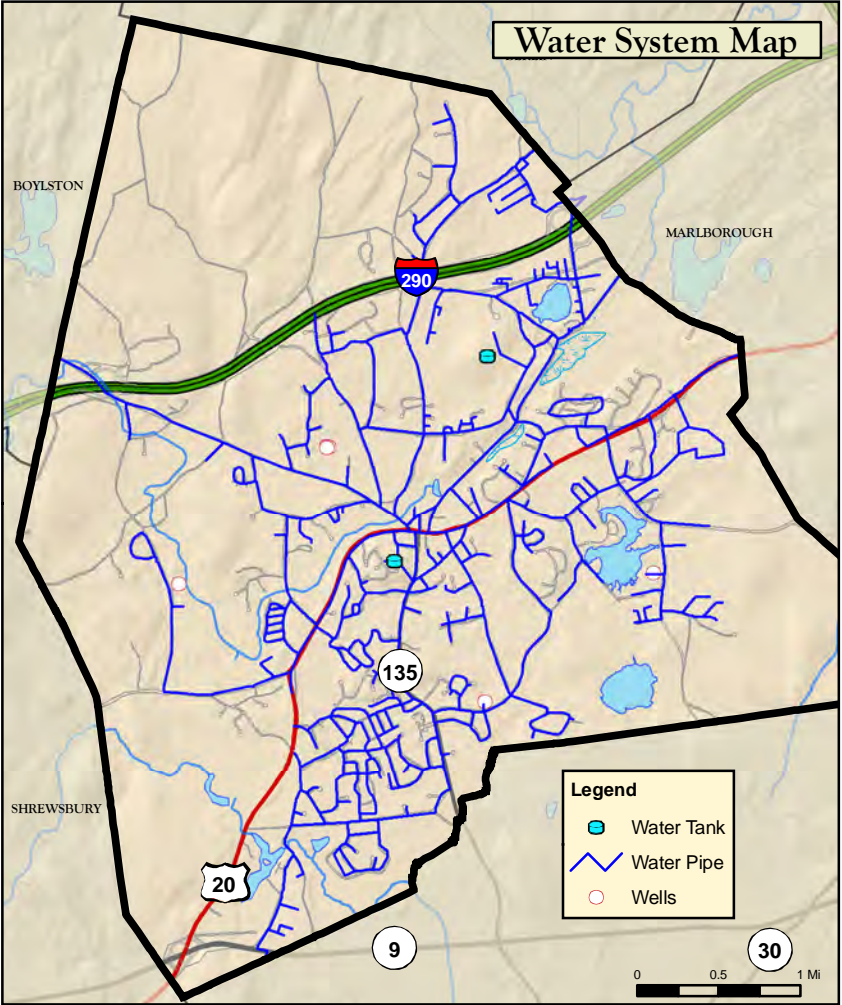
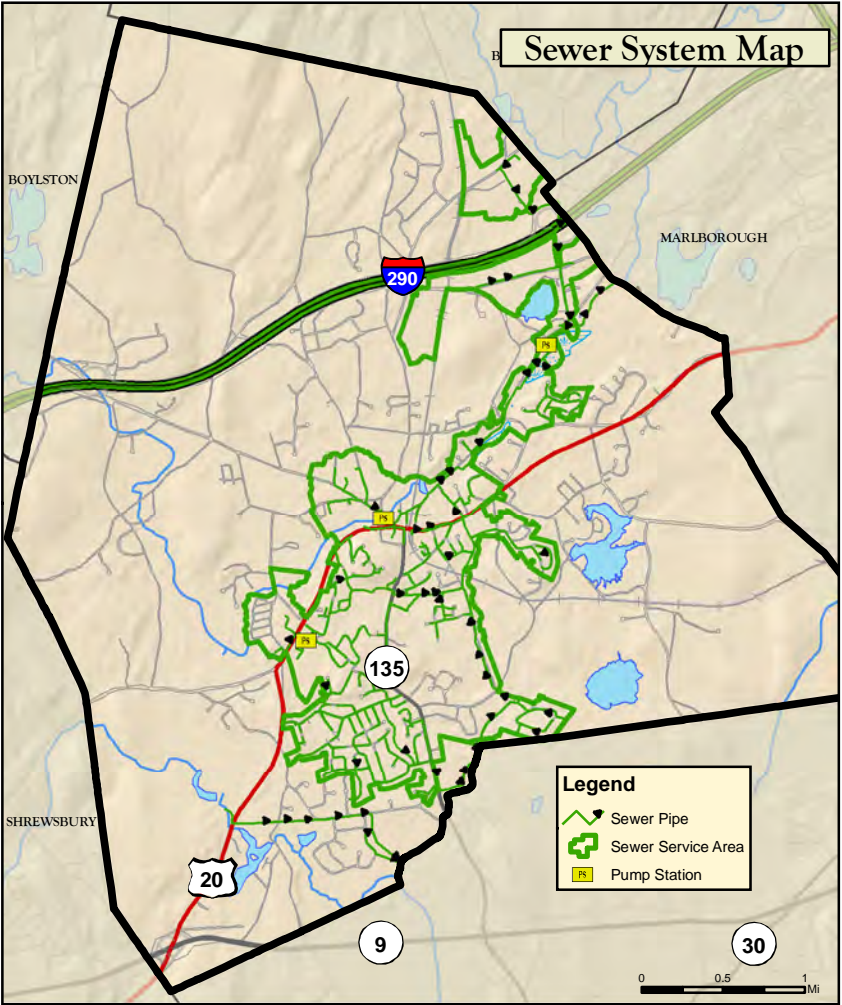
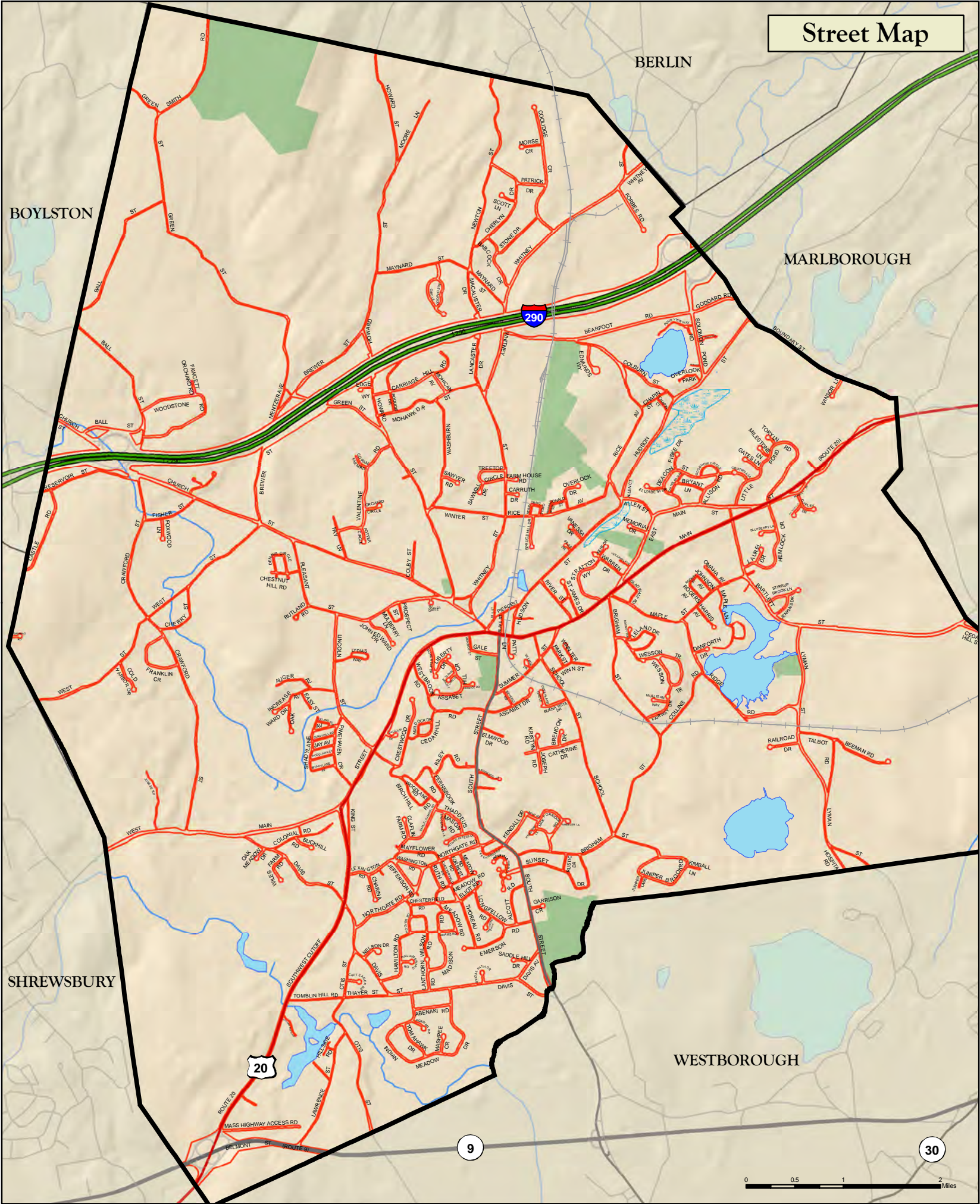
This map was produced by the Town of Northborough Geographic Information System (GIS) using data derived from aerial photography and/or cadastral mapping performed by the James W. Sewall Company, Sanborn Map Company and data from MassGIS.

This map is part of a series created in coordination with the Central Massachusetts Regional Planning Commission (CMRPC) for use in the Town's revised Open Space Plan.

This map is for planning purposes only and should not be used for larger scale analysis. The Town of Northborough, CMRPC or any of its respective subcontractors shall not be held liable for any use of the data or images shown on this map, nor is any warranty of accuracy expressed. All uses of this map are subject to field verification.

Questions should be directed to the MIS/GIS Department at (508) 393-1524 or gis@town.northborough.ma.us.

March 2010



Town of Northborough Open Space Plan



Map 2

Infrastructure Map

Legend

- Interstate Highway
- U.S. Federal Route
- State Route
- Local Roads



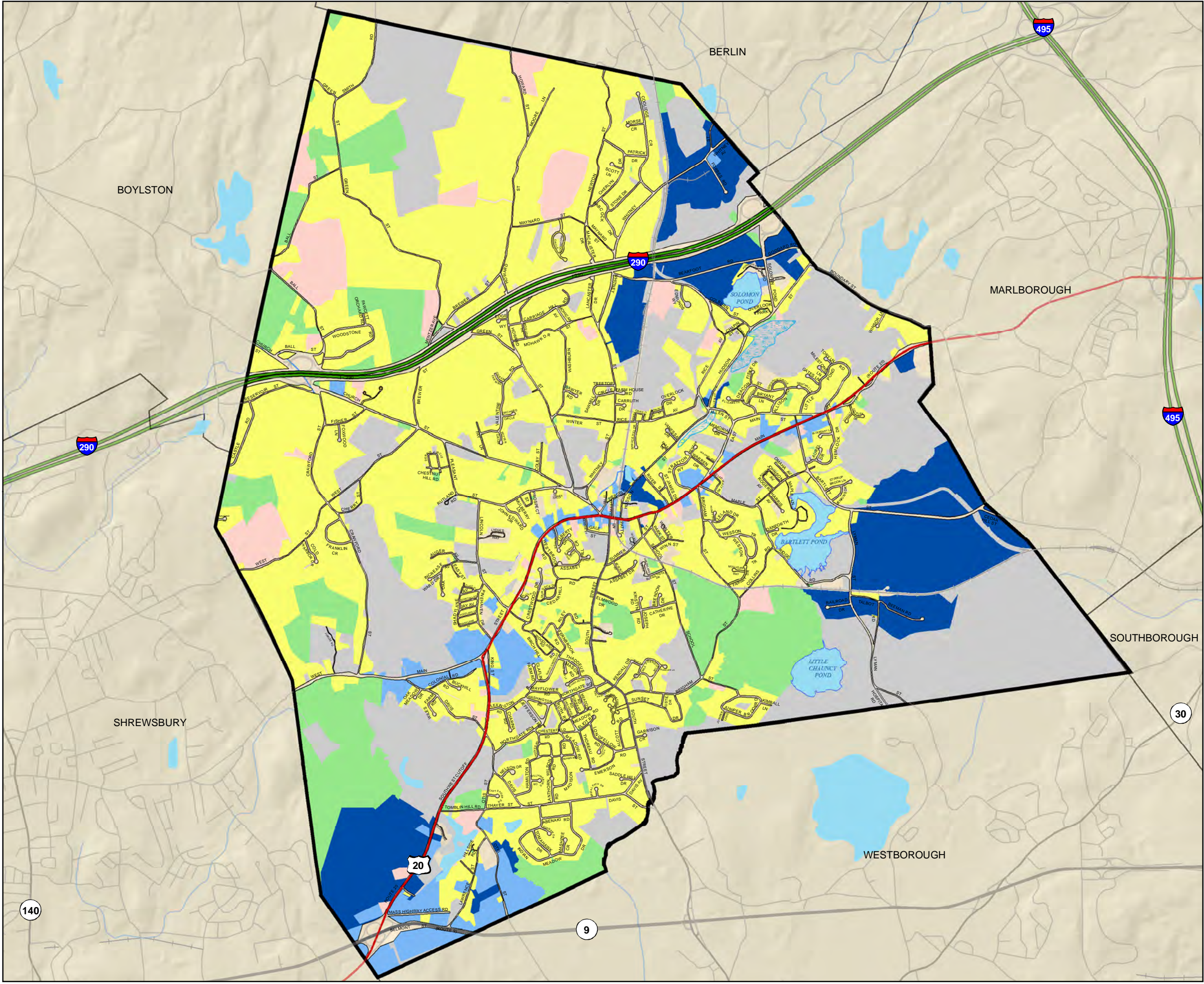
This map was produced by the Town of Northborough Geographic Information System (GIS) using data derived from aerial photography and/or cadastral mapping performed by the James W. Sewall Company, Sanborn Map Company and data from MassGIS.

This map is part of a series created in coordination with the Central Massachusetts Regional Planning Commission (CMRPC) for use in the Town's revised Open Space Plan.

This map is for planning purposes only and should not be used for larger scale analysis. The Town of Northborough, CMRPC or any of its respective subcontractors shall not be held liable for any use of the data or images shown on this map, nor is any warranty of accuracy expressed. All uses of this map are subject to field verification.

Questions should be directed to the MIS/GIS Department at (508) 393-1524 or gis@town.northborough.ma.us.

March 2010



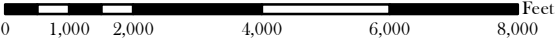
Town of Northborough
Open Space Plan



Map 3
Land Use Map

Legend

- Multiple Use
- Residential
- Open Space/Chapter Land
- Commercial
- Industrial
- Exempt



This map was produced by the Town of Northborough Geographic Information System (GIS) using data derived from aerial photography and/or cadastral mapping performed by the James W. Sewall Company, Sanborn Map Company and data from MassGIS.

This map is part of a series created in coordination with the Central Massachusetts Regional Planning Commission (CMRPC) for use in the Town's revised Open Space Plan.

This map is for planning purposes only and should not be used for larger scale analysis. The Town of Northborough, CMRPC or any of its respective subcontractors shall not be held liable for any use of the data or images shown on this map, nor is any warranty of accuracy expressed. All uses of this map are subject to field verification.

Questions should be directed to the MIS/GIS Department at (508) 393-1524 or gis@town.northborough.ma.us.

March 2010

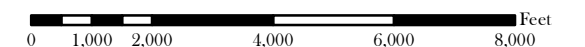
Town of Northborough Open Space Plan



Map 4 Zoning Map

Legend

- Business East (BE)
- Industrial (I)
- Business South (BS)
- Business West (BW)
- Highway Business (HB)
- Downtown Business (DB)
- Downtown Neighborhood (DN)
- Residence A (RA)
- Residence B (RB)
- Residence C (RC)
- General Residential (GR)
- Main Street Residential (MSR)



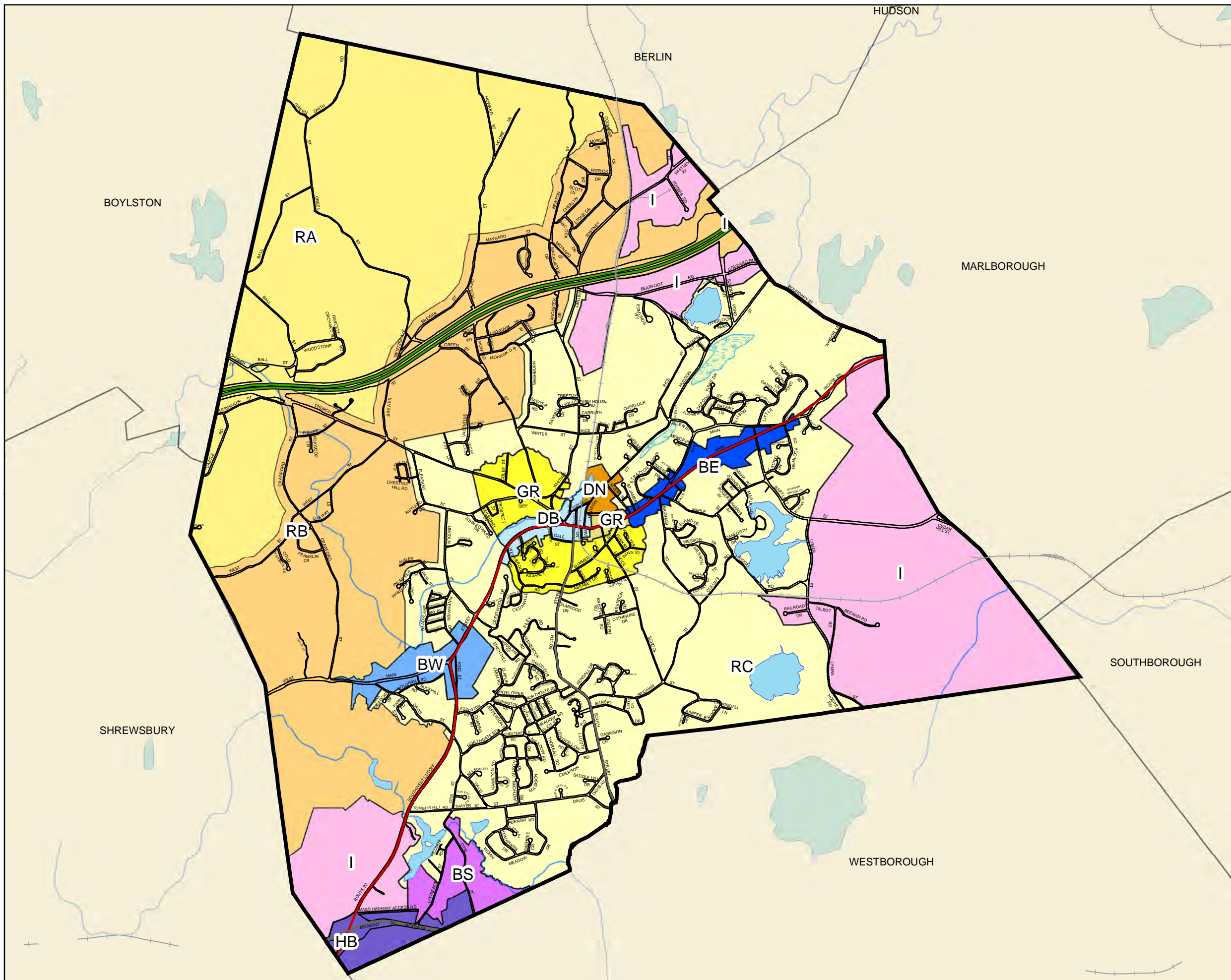
This map was produced by the Town of Northborough Geographic Information System (GIS) using data derived from aerial photography and/or cadastral mapping performed by the James W. Sewall Company, Sanborn Map Company and data from MassGIS.

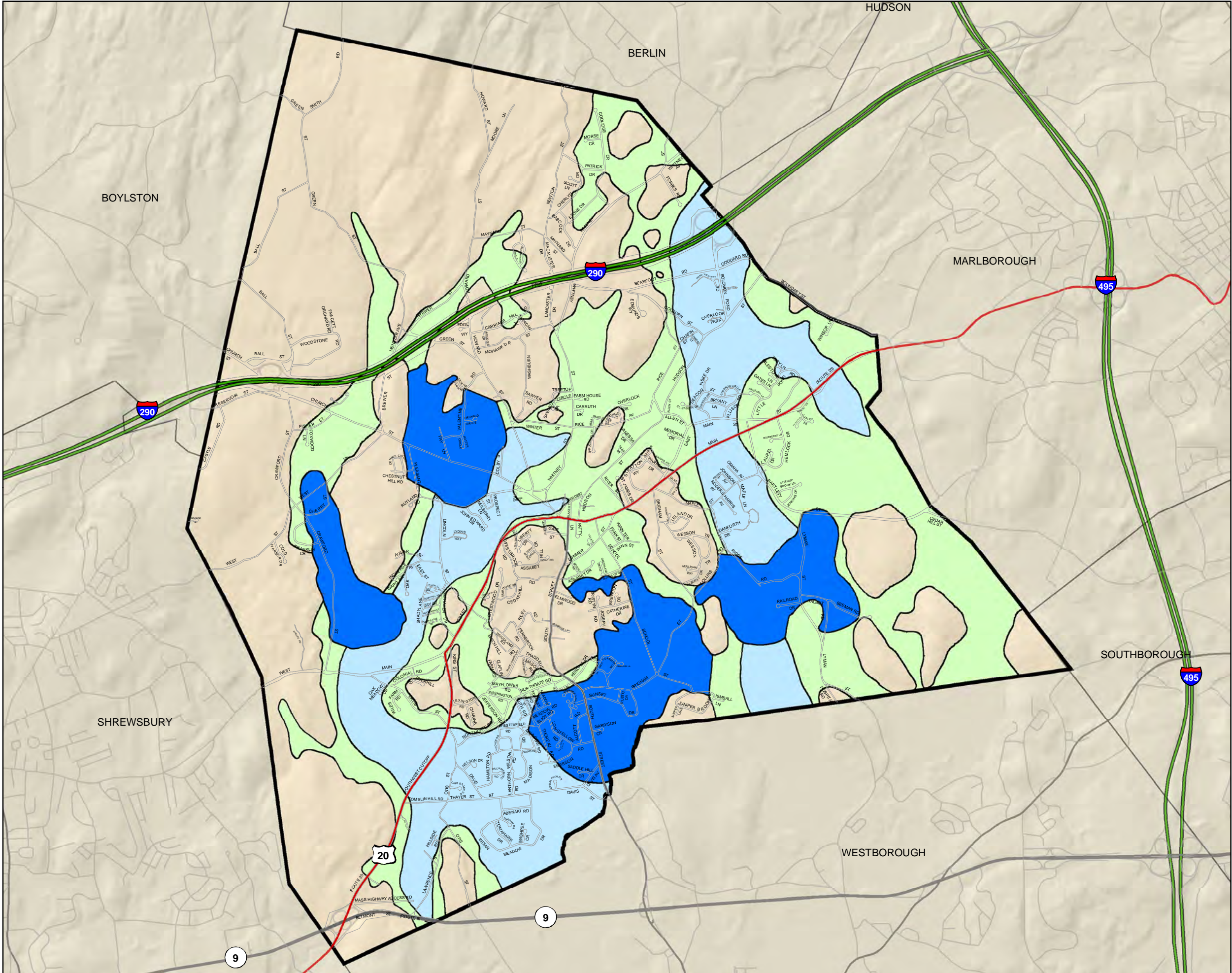
This map is part of a series created in coordination with the Central Massachusetts Regional Planning Commission (CMRPC) for use in the Town's revised Open Space Plan.

This map is for planning purposes only and should not be used for larger scale analysis. The Town of Northborough, CMRPC or any of its respective subcontractors shall not be held liable for any use of the data or images shown on this map, nor is any warranty of accuracy expressed. All uses of this map are subject to field verification.

Questions should be directed to the MIS/GIS Department at (508) 393-1524 or gis@town.northborough.ma.us.

July 2009





Town of Northborough Open Space Plan






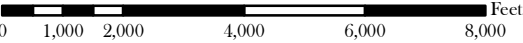
Map 5

Groundwater Overlay Districts

Legend

Groundwater Districts

-  Area 1
-  Area 2
-  Area 3



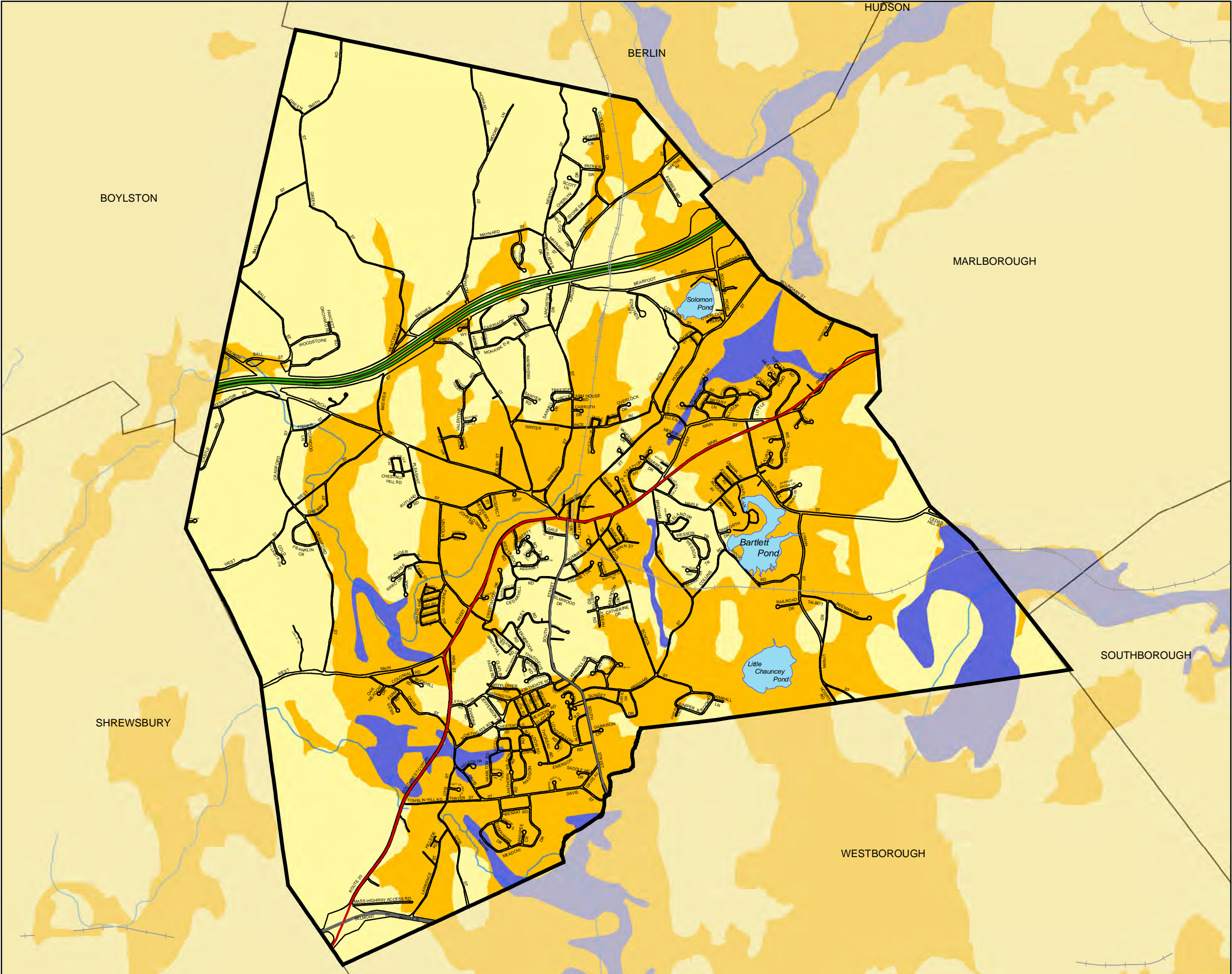
This map was produced by the Town of Northborough Geographic Information System (GIS) using data derived from aerial photography and/or cadastral mapping performed by the James W. Sewall Company, Sanborn Map Company and data from MassGIS.

This map is part of a series created in coordination with the Central Massachusetts Regional Planning Commission (CMRPC) for use in the Town's revised Open Space Plan.

This map is for planning purposes only and should not be used for larger scale analysis. The Town of Northborough, CMRPC or any of its respective subcontractors shall not be held liable for any use of the data or images shown on this map, nor is any warranty of accuracy expressed. All uses of this map are subject to field verification.

Questions should be directed to the MIS/GIS Department at (508) 393-1524 or gis@town.northborough.ma.us.

March 2010

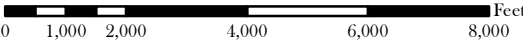


Town of Northborough
Open Space Plan



Map 6
Surficial Geology

- Legend**
- Sand and Gravel
 - Till or Bedrock
 - Sandy Till over Sand
 - End Moraine
 - Large Sand Deposit
 - Fine-Grained Deposit
 - Floodplain Alluvium



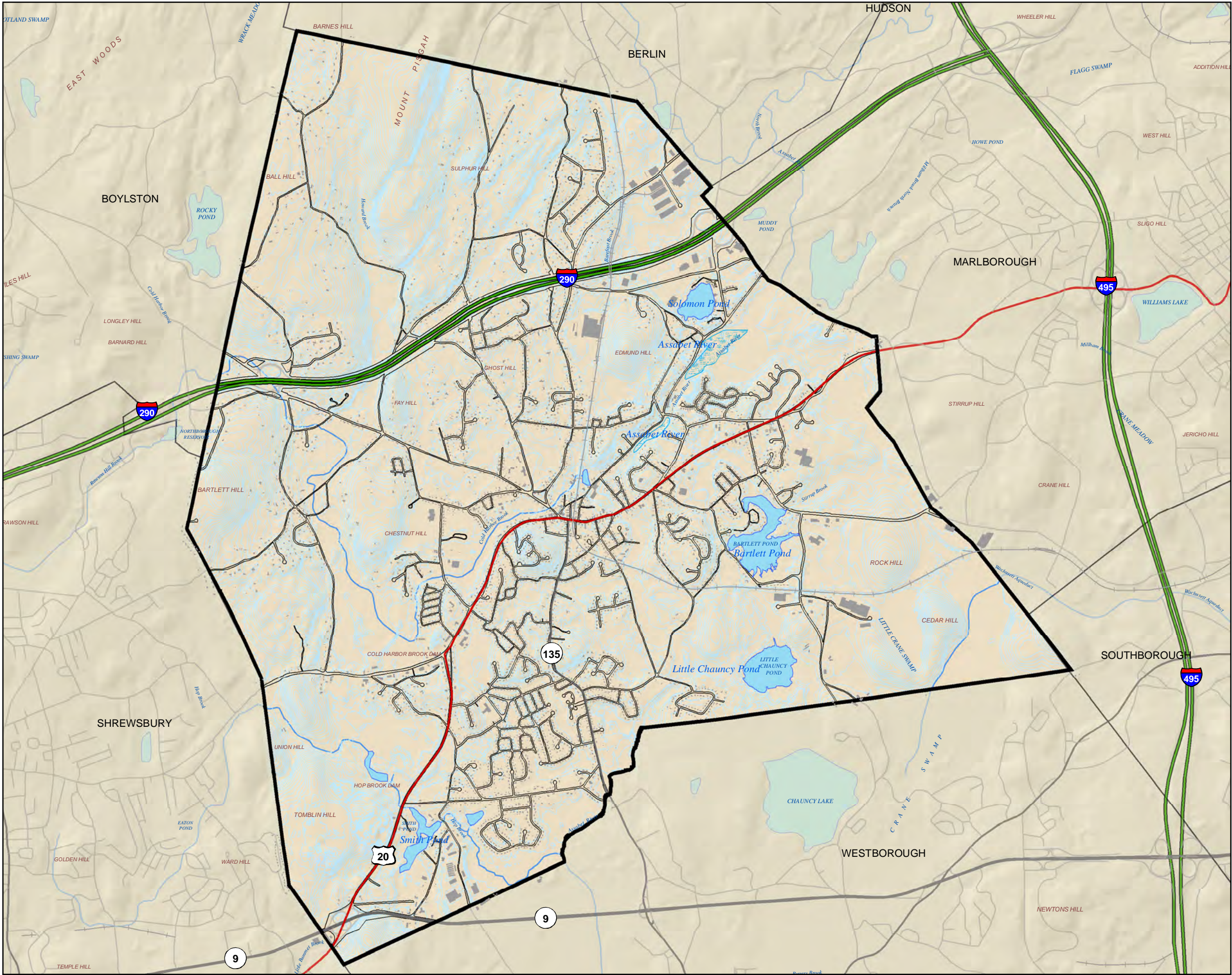
This map was produced by the Town of Northborough Geographic Information System (GIS) using data derived from aerial photography and/or cadastral mapping performed by the James W. Sewall Company, Sanborn Map Company and data from MassGIS.

This map is part of a series created in coordination with the Central Massachusetts Regional Planning Commission (CMRPC) for use in the Town's revised Open Space Plan.

This map is for planning purposes only and should not be used for larger scale analysis. The Town of Northborough, CMRPC or any of its respective subcontractors shall not be held liable for any use of the data or images shown on this map, nor is any warranty of accuracy expressed. All uses of this map are subject to field verification.

Questions should be directed to the MIS/GIS Department at (508) 393-1524 or gis@town.northborough.ma.us.

March 2010



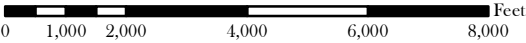
Town of Northborough Open Space Plan



Map 7 Topography Map

Legend

- 10' Contours
- Rivers and Streams
- Lakes and Ponds



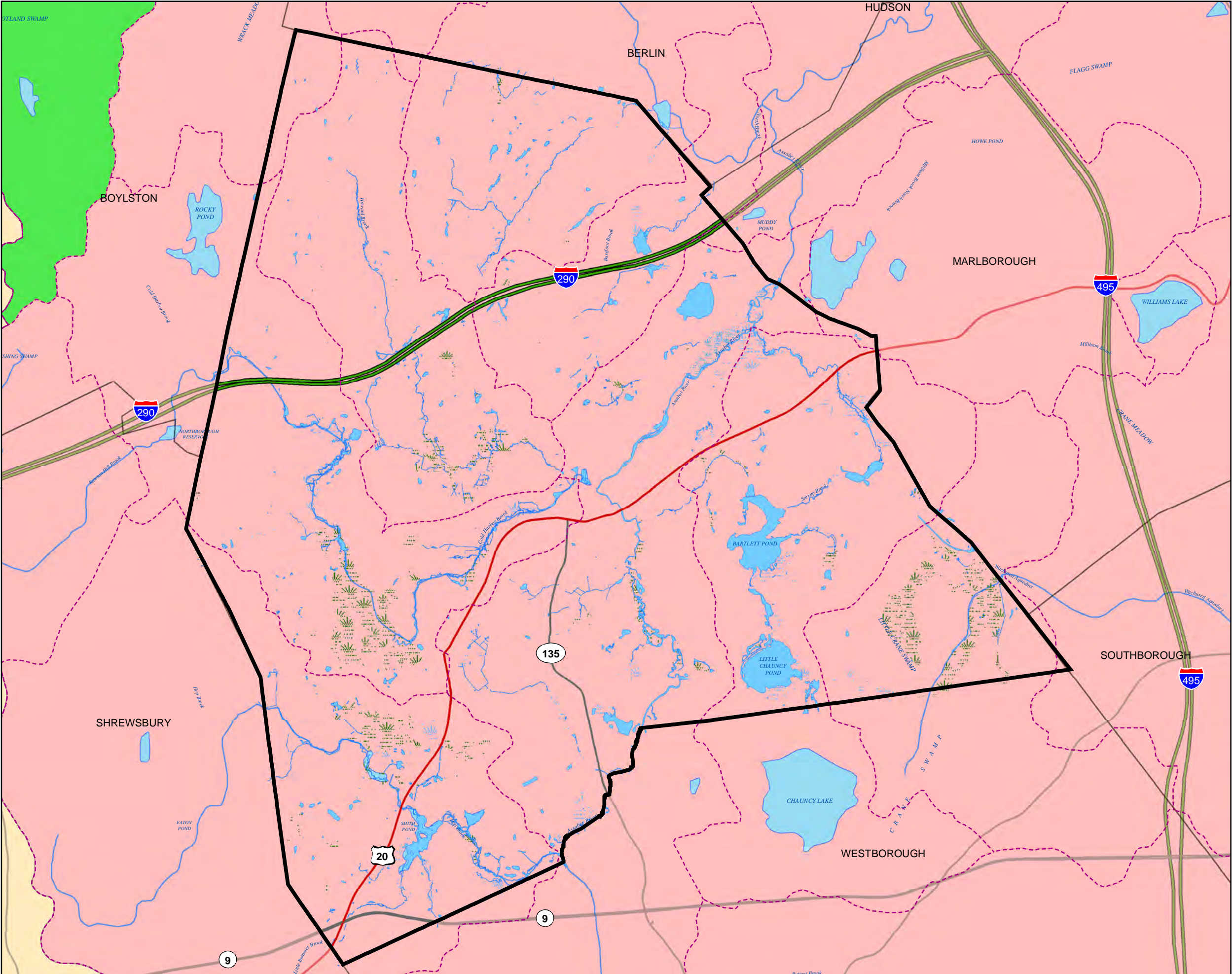
This map was produced by the Town of Northborough Geographic Information System (GIS) using data derived from aerial photography and/or cadastral mapping performed by the James W. Sewall Company, Sanborn Map Company and data from MassGIS.

This map is part of a series created in coordination with the Central Massachusetts Regional Planning Commission (CMRPC) for use in the Town's revised Open Space Plan.

This map is for planning purposes only and should not be used for larger scale analysis. The Town of Northborough, CMRPC or any of its respective subcontractors shall not be held liable for any use of the data or images shown on this map, nor is any warranty of accuracy expressed. All uses of this map are subject to field verification.

Questions should be directed to the MIS/GIS Department at (508) 393-1524 or gis@town.northborough.ma.us.

April 2010



Town of Northborough Open Space Plan



Map 8

Watersheds, Wetlands & Surface Water Map

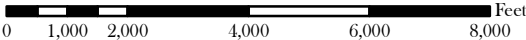
Legend

Hydrography

- Forested Wetlands
- Wetlands
- Lake or Pond
- Rivers and Streams

Major Basins

- Blackstone
- Concord
- Nashua
- Sub-Basins



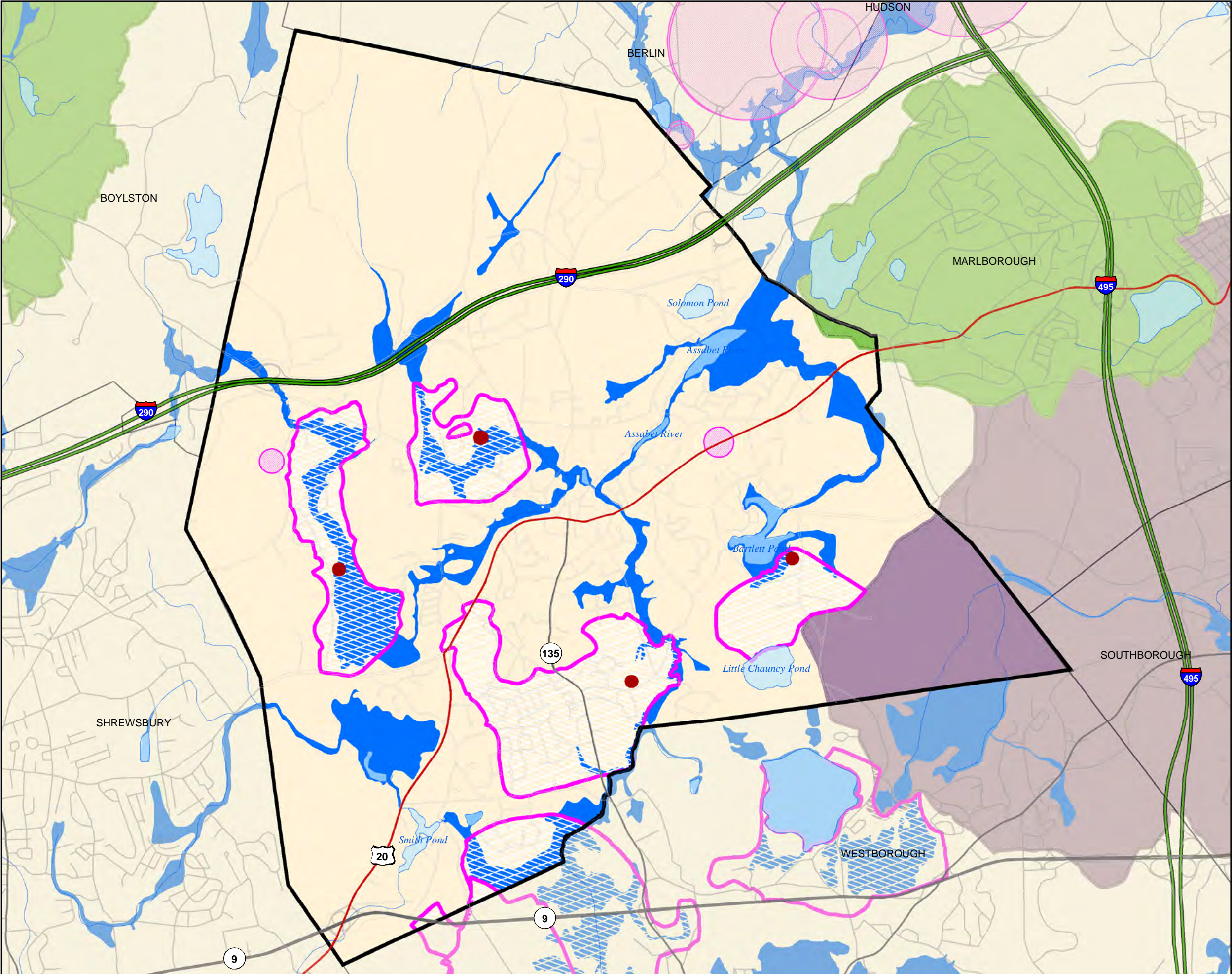
This map was produced by the Town of Northborough Geographic Information System (GIS) using data derived from aerial photography and/or cadastral mapping performed by the James W. Sewall Company, Sanborn Map Company and data from MassGIS.

This map is part of a series created in coordination with the Central Massachusetts Regional Planning Commission (CMRPC) for use in the Town's revised Open Space Plan.

This map is for planning purposes only and should not be used for larger scale analysis. The Town of Northborough, CMRPC or any of its respective subcontractors shall not be held liable for any use of the data or images shown on this map, nor is any warranty of accuracy expressed. All uses of this map are subject to field verification.

Questions should be directed to the MIS/GIS Department at (508) 393-1524 or gis@town.northborough.ma.us.

July 2009



Town of Northborough Open Space Plan

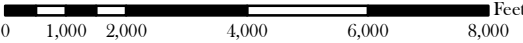


Map 9

Flood Plains and DEP Zone IIs

Legend

- Rivers & Streams
- Lakes, Ponds
- Community Ground Water Wells
- IWPAs
- DEP Approved Zone IIs
- 100 Year Flood Plains



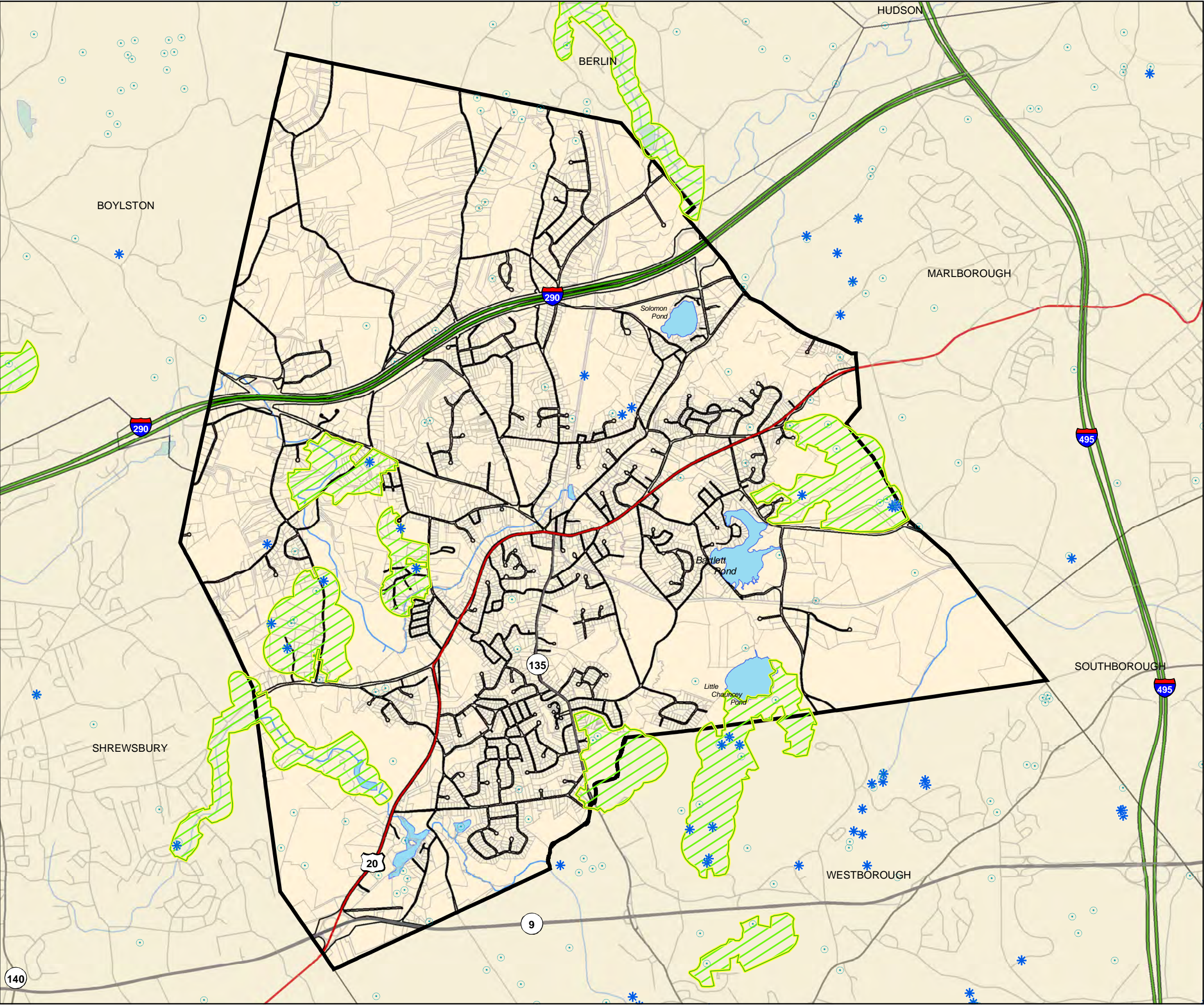
This map was produced by the Town of Northborough Geographic Information System (GIS) using data derived from aerial photography and/or cadastral mapping performed by the James W. Sewall Company, Sanborn Map Company and data from MassGIS.

This map is part of a series created in coordination with the Central Massachusetts Regional Planning Commission (CMRPC) for use in the Town's revised Open Space Plan.

This map is for planning purposes only and should not be used for larger scale analysis. The Town of Northborough, CMRPC or any of its respective subcontractors shall not be held liable for any use of the data or images shown on this map, nor is any warranty of accuracy expressed. All uses of this map are subject to field verification.

Questions should be directed to the MIS/GIS Department at (508) 393-1524 or gis@town.northborough.ma.us.

March 2010



Town of Northborough Open Space Plan



Map 10 Unique Environments

Legend

- Potential Vernal Pools
- NHESP Certified Vernal Pools
- NHESP Priority Habitats of Rare Species



0 1,000 2,000 4,000 6,000 8,000 Feet

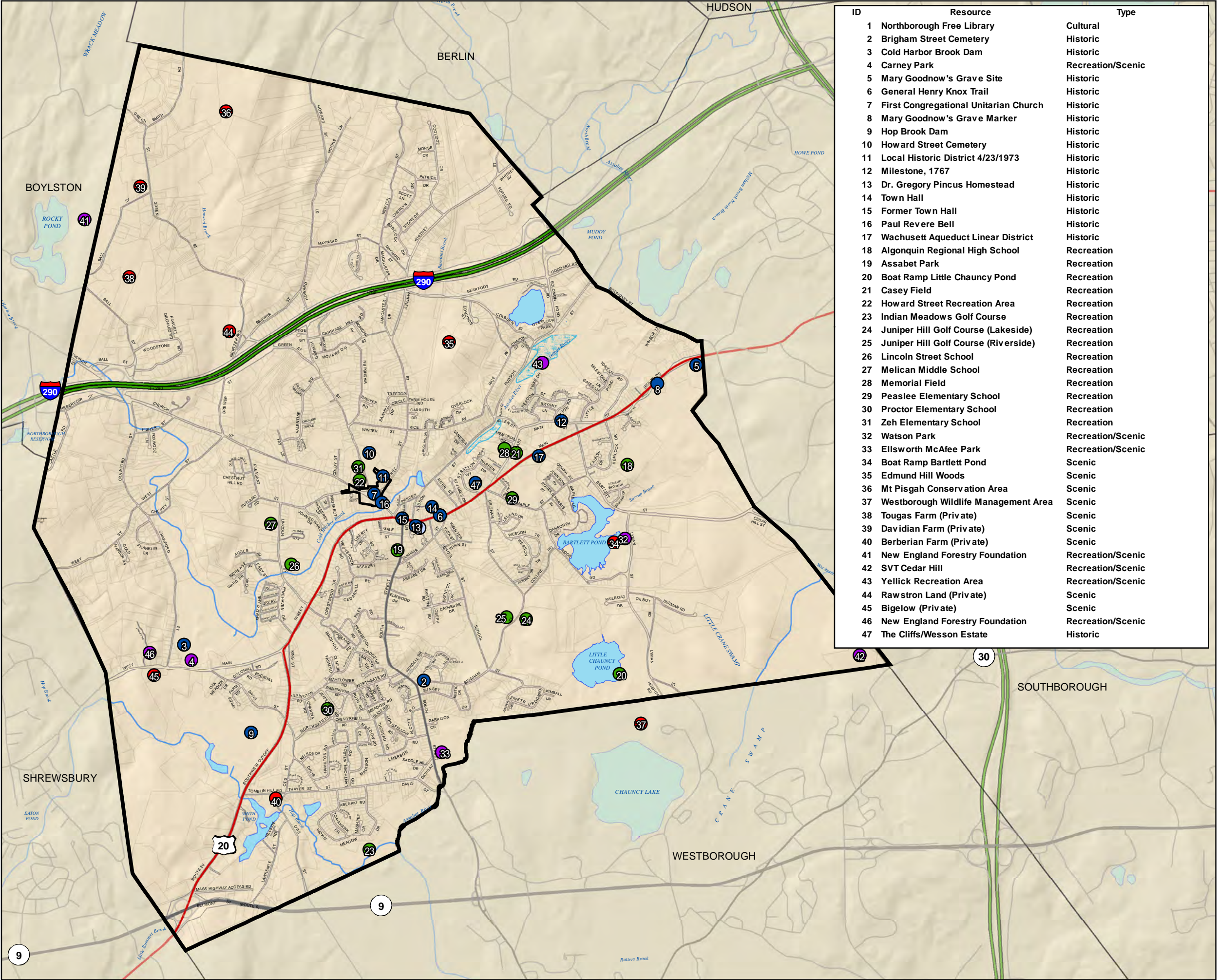
This map was produced by the Town of Northborough Geographic Information System (GIS) using data derived from aerial photography and/or cadastral mapping performed by the James W. Sewall Company, Sanborn Map Company and data from MassGIS.

This map is part of a series created in coordination with the Central Massachusetts Regional Planning Commission (CMRPC) for use in the Town's revised Open Space Plan.

This map is for planning purposes only and should not be used for larger scale analysis. The Town of Northborough, CMRPC or any of its respective subcontractors shall not be held liable for any use of the data or images shown on this map, nor is any warranty of accuracy expressed. All uses of this map are subject to field verification.

Questions should be directed to the MIS/GIS Department at (508) 393-1524 or gis@town.northborough.ma.us.

March 2010



ID	Resource	Type
1	Northborough Free Library	Cultural
2	Brigham Street Cemetery	Historic
3	Cold Harbor Brook Dam	Historic
4	Carney Park	Recreation/Scenic
5	Mary Goodnow's Grave Site	Historic
6	General Henry Knox Trail	Historic
7	First Congregational Unitarian Church	Historic
8	Mary Goodnow's Grave Marker	Historic
9	Hop Brook Dam	Historic
10	Howard Street Cemetery	Historic
11	Local Historic District 4/23/1973	Historic
12	Milestone, 1767	Historic
13	Dr. Gregory Pincus Homestead	Historic
14	Town Hall	Historic
15	Former Town Hall	Historic
16	Paul Revere Bell	Historic
17	Wachusett Aqueduct Linear District	Historic
18	Algonquin Regional High School	Recreation
19	Assabet Park	Recreation
20	Boat Ramp Little Chauncy Pond	Recreation
21	Casey Field	Recreation
22	Howard Street Recreation Area	Recreation
23	Indian Meadows Golf Course	Recreation
24	Juniper Hill Golf Course (Lakeside)	Recreation
25	Juniper Hill Golf Course (Riverside)	Recreation
26	Lincoln Street School	Recreation
27	Melican Middle School	Recreation
28	Memorial Field	Recreation
29	Peaslee Elementary School	Recreation
30	Proctor Elementary School	Recreation
31	Zeh Elementary School	Recreation
32	Watson Park	Recreation/Scenic
33	Ellsworth McAfee Park	Recreation/Scenic
34	Boat Ramp Bartlett Pond	Scenic
35	Edmund Hill Woods	Scenic
36	Mt Pisgah Conservation Area	Scenic
37	Westborough Wildlife Management Area	Scenic
38	Tougas Farm (Private)	Scenic
39	Davidian Farm (Private)	Scenic
40	Berberian Farm (Private)	Scenic
41	New England Forestry Foundation	Recreation/Scenic
42	SVT Cedar Hill	Recreation/Scenic
43	Yellick Recreation Area	Recreation/Scenic
44	Rawstron Land (Private)	Scenic
45	Bigelow (Private)	Scenic
46	New England Forestry Foundation	Recreation/Scenic
47	The Cliffs/Wesson Estate	Historic

Town of Northborough
Open Space Plan



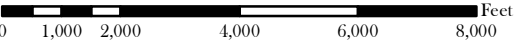
Map 11

Historic, Cultural and
Scenic Resources Map

Legend

Historic & Cultural Resources
Resource Type

- Cultural
- Historic
- Recreation
- Recreation/Scenic
- Scenic
- Historic District



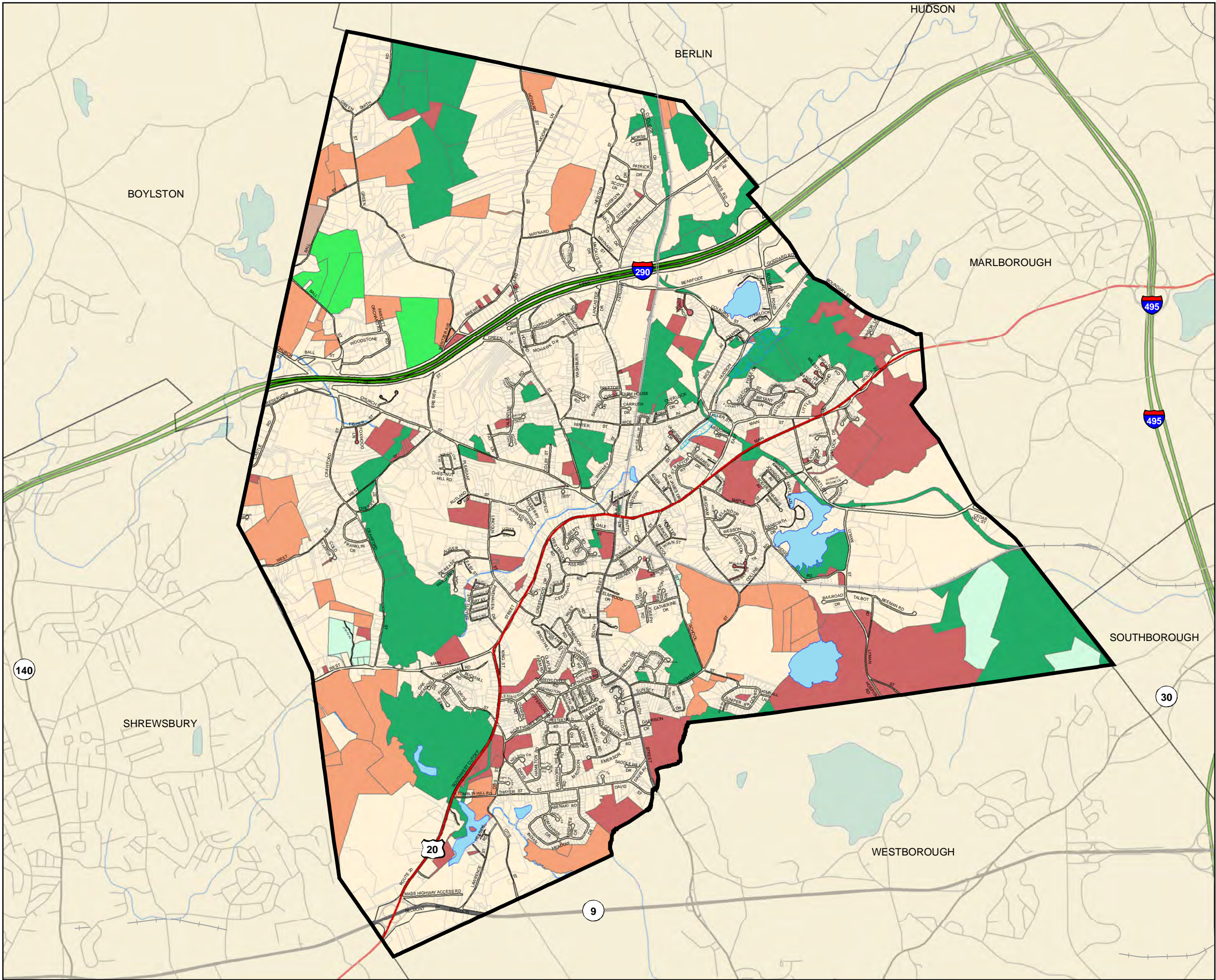
This map was produced by the Town of Northborough Geographic Information System (GIS) using data derived from aerial photography and/or cadastral mapping performed by the James W. Sewall Company, Sanborn Map Company and data from MassGIS.

This map is part of a series created in coordination with the Central Massachusetts Regional Planning Commission (CMRPC) for use in the Town's revised Open Space Plan.

This map is for planning purposes only and should not be used for larger scale analysis. The Town of Northborough, CMRPC or any of its respective subcontractors shall not be held liable for any use of the data or images shown on this map, nor is any warranty of accuracy expressed. All uses of this map are subject to field verification.

Questions should be directed to the MIS/GIS Department at (508) 393-1524 or gis@town.northborough.ma.us.

April 2010



Town of Northborough Open Space Plan



Map 12 Open Space Map

Legend

Level of Protection/Ownership

- Limited, Non-Profit
- Limited, Private
- Limited, Public
- Permanent, Non-Profit
- Permanent, Private
- Permanent, Public



0 1,000 2,000 4,000 6,000 8,000 Feet

This map was produced by the Town of Northborough Geographic Information System (GIS) using data derived from aerial photography and/or cadastral mapping performed by the James W. Sewall Company, Sanborn Map Company and data from MassGIS.

This map is part of a series created in coordination with the Central Massachusetts Regional Planning Commission (CMRPC) for use in the Town's revised Open Space Plan.

This map is for planning purposes only and should not be used for larger scale analysis. The Town of Northborough, CMRPC or any of its respective subcontractors shall not be held liable for any use of the data or images shown on this map, nor is any warranty of accuracy expressed. All uses of this map are subject to field verification.

Questions should be directed to the MIS/GIS Department at (508) 393-1524 or gis@town.northborough.ma.us.

March 2010

Goal 1. Preserve open space for the Town's overall benefit.
Objectives
- A. Acquire through fee acquisition or conservation restriction additional open space permanently protected by the Town, State or non-profits.
- B. Develop a schedule and process to regularly review land use changes, identify and prioritize areas for protection and acquisition based on open space value.
- C. Increase public awareness of opportunities to preserve open space.
- D. Maintain rural character.
- E. Explore adding permanent protections to all Town-owned open space not currently protected.

Goal 2. Improve community appreciation, understanding, active involvement and commitment to conservation.
Objectives
- A. Develop message and material about benefits of open space preservation.
- B. Spread the message. Educate residents about the need and benefits of open space preservation.
- C. Increase the number and level of involvement of persons who support financially, volunteer, or otherwise contribute to, open space for conservation purposes.

Goal 3. Improve, expand, and manage open space-related recreational opportunities.
Objectives
- A. Educate residents regarding the existence and availability of open space-related recreation areas.
- B. Improve condition of Town's open space-related recreation areas.
- C. Work with State agencies to incorporate use of state-owned land adjacent to Town-owned land for open space-related recreational opportunities such as hiking and other natural resource related activities.
- D. Cooperate and collaborate with nearby/adjacent towns to formalize agreements regarding Mt. Pisgah, Lake Chauncy, and Westborough State Hospital.

Goal 4. Improve, expand, and manage recreation opportunities, facilities and programs.
Objectives
- A. Continue to raise awareness of Town recreation opportunities, facilities and programs.
- B. Continue to evaluate Town recreation opportunities, facilities and programs.
- C. Develop a resource development strategy or business plan to support the recreation department staff, activities (including program scholarships), recreation area maintenance and improvements.
- D. Improve condition of Town's recreation properties.
- E. Work with State agencies to incorporate use of state-owned land adjacent to Town-owned land for active recreation.
- F. Increase access and use of recreation facilities and programs to more users.

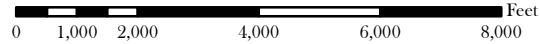
Town of Northborough
Open Space Plan



Map 13
Action Plan Map
Goals and Objectives

Legend

	Limited, Non-Profit
	Limited, Private
	Limited, Public
	Permanent, Non-Profit
	Permanent, Private
	Permanent, Public



This map was produced by the Town of Northborough Geographic Information System (GIS) using data derived from aerial photography and/or cadastral mapping performed by the James W. Sewall Company, Sanborn Map Company and data from MassGIS.

This map is part of a series created in coordination with the Central Massachusetts Regional Planning Commission (CMRPC) for use in the Town's revised Open Space Plan.

This map is for planning purposes only and should not be used for larger scale analysis. The Town of Northborough, CMRPC or any of its respective subcontractors shall not be held liable for any use of the data or images shown on this map, nor is any warranty of accuracy expressed. All uses of this map are subject to field verification.

Questions should be directed to the MIS/GIS Department at (508) 393-1524 or gis@town.northborough.ma.us.

March 2010