

NEW FIRE STATION
NORTHBOROUGH, MA

DECEMBER 14, 2023

AGENDA – LISTENING SESSION

- Our goal is to listen as you describe + discuss how you envision this project making a positive impact on the downtown planning initiative
- Design Process
- Context + Local Town Architecture
 - Neighboring Sites + Businesses
 - Industrial + Commercial Buildings
 - Residential Buildings
 - Town Buildings
- Precedence Studies
- Initial Site Placement of Building + Site Elements



DESIGN PROCESS

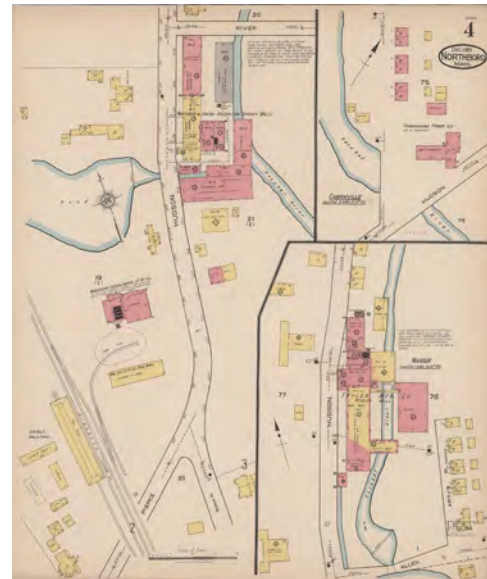
- How we approach solving the Fire Department design problem
 - Develop program that reflects operational needs of the Fire Department
 - Study context: Neighboring buildings + town buildings; look at other precedent buildings
 - Develop plans to support FD operations + then building forms that match those needs
 - Review building materials for longevity + look at sustainability perspectives
- We do not recommend materials or elements that do not support building use
- We design for the unified whole - taking into account operations + layout, user needs + comforts, aesthetic expectations, energy consumption + costs



FIRE STATION NEIGHBORING SITES + BUSINESSES



NORTHBOROUGH INDUSTRIAL + COMMERCIAL BUILDINGS



NORTHBOROUGH INDUSTRIAL + COMMERCIAL BUILDINGS



NORTHBOROUGH INDUSTRIAL + COMMERCIAL BUILDINGS



NORTHBOROUGH RESIDENTIAL BUILDINGS



NORTHBOROUGH TOWN BUILDINGS: NORTHBOROUGH FREE LIBRARY



NORTHBOROUGH TOWN BUILDINGS: TOWN OFFICES



NORTHBOROUGH TOWN BUILDINGS: SENIOR CENTER, POLICE DEPARTMENT, WHITE CLIFFS



NORTHBOROUGH TOWN BUILDINGS: ELEMENTARY + MIDDLE SCHOOLS



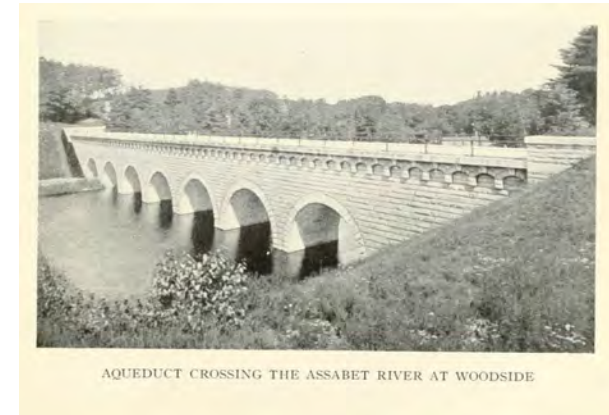
NORTHBOROUGH TOWN BUILDINGS: TOWN FIRE STATIONS



NORTHBOROUGH TOWN BUILDINGS: OLD TOWN HALL



OTHER NORTHBOROUGH STRUCTURES OF NOTE: AQUEDUCT CROSSING ASSABET RIVER



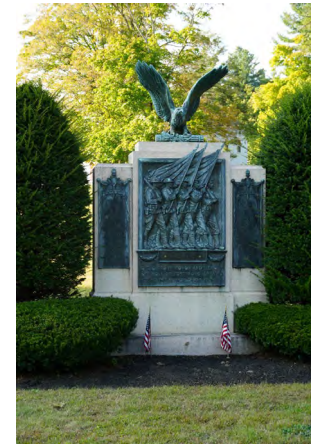
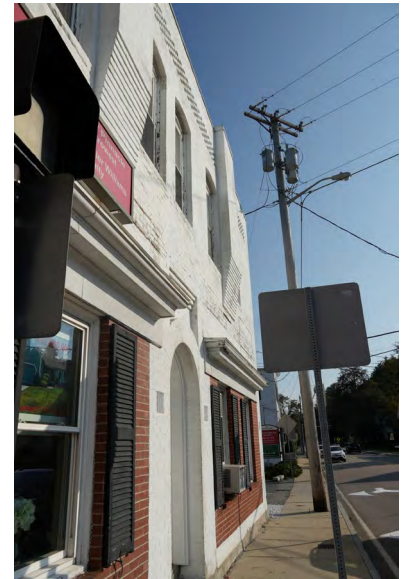
AQUEDUCT CROSSING THE ASSABET RIVER AT WOODSIDE



OTHER NORTHBOROUGH STRUCTURES OF NOTE: CHURCHES + MONUMENTS



EXISTING DOWNTOWN STREETScape



COMMITTEE NOTED PRECEDENCE IMAGERY - SOUTHBOROUGH PUBLIC SAFETY



Photo by John Galla www.firenews.org



COMMITTEE NOTED PRECEDENCE IMAGERY - NATICK PUBLIC SAFETY



COMMITTEE NOTED PRECEDENCE IMAGERY - WESTPORT FIRE



COMMITTEE NOTED PRECEDENCE IMAGERY - WAYLAND FIRE DEPARTMENT



Photo by John Galla www.firenews.org



COMMITTEE NOTED PRECEDENCE IMAGERY - MILLBURY FIRE DEPARTMENT



COMMITTEE NOTED PRECEDENCE IMAGERY - LYNNFIELD FIRE DEPARTMENT



COMMITTEE NOTED PRECEDENCE IMAGERY – c'est la vie + MONROE STREET BLOCK



COMMITTEE NOTED PRECEDENCE IMAGERY – LaLa Java + CVS



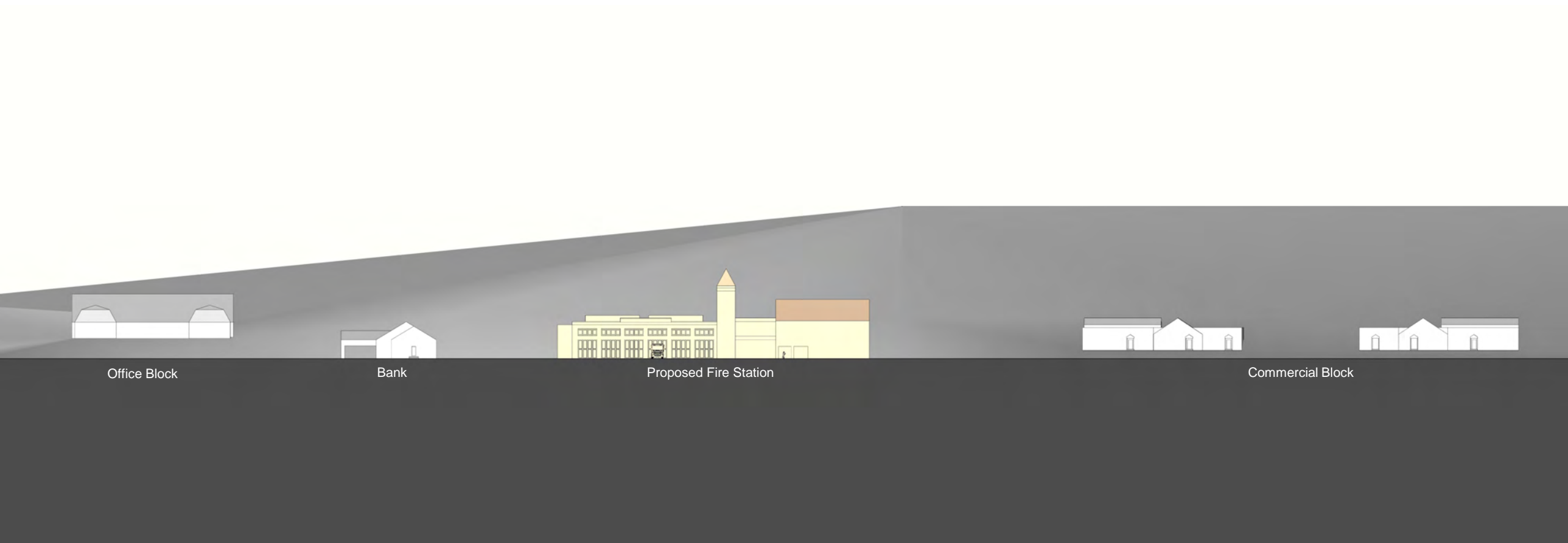
PRECEDENCE STUDIES



PRECEDENCE STUDIES



PRECEDENCE STUDIES

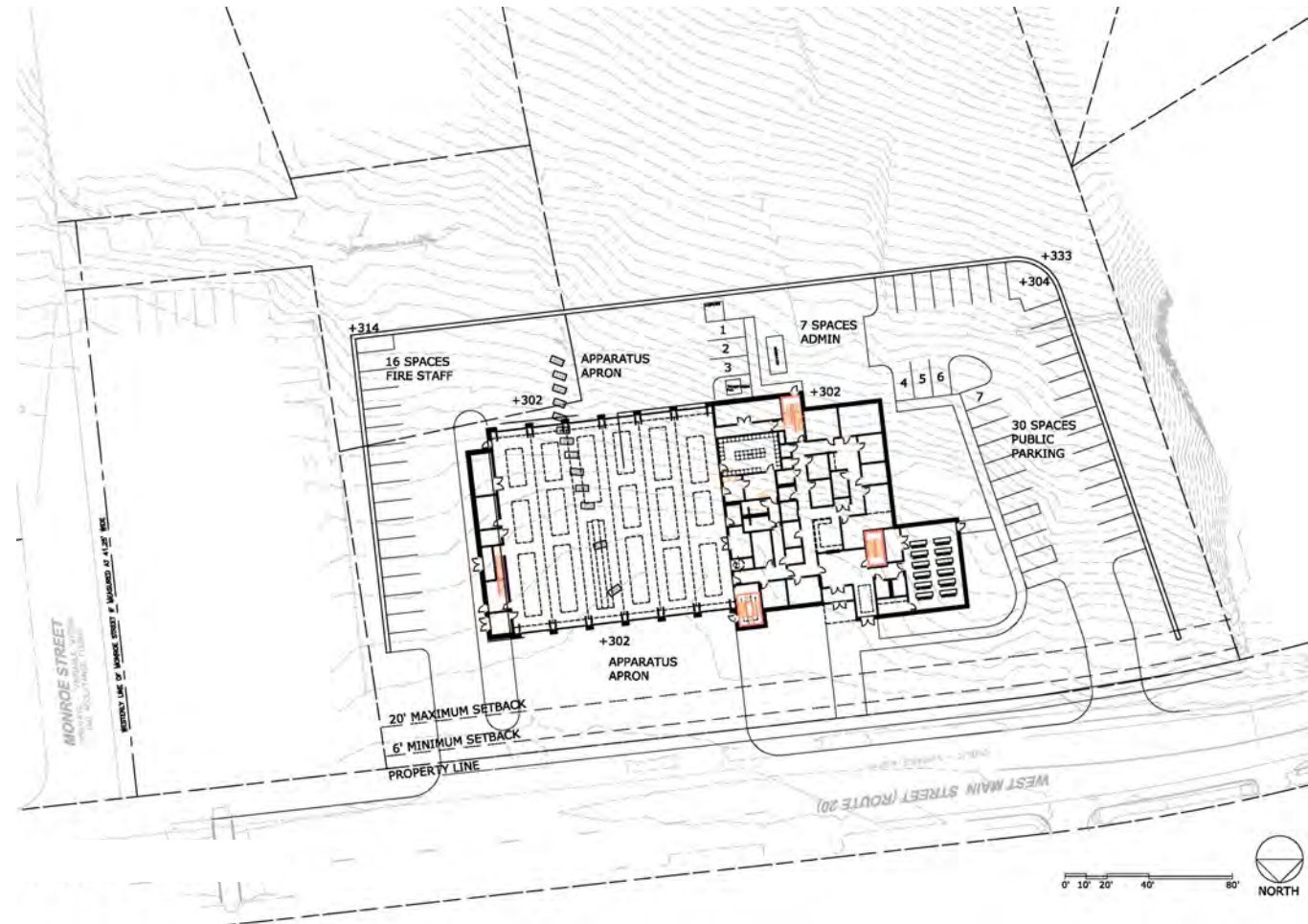


PRECEDENCE STUDIES



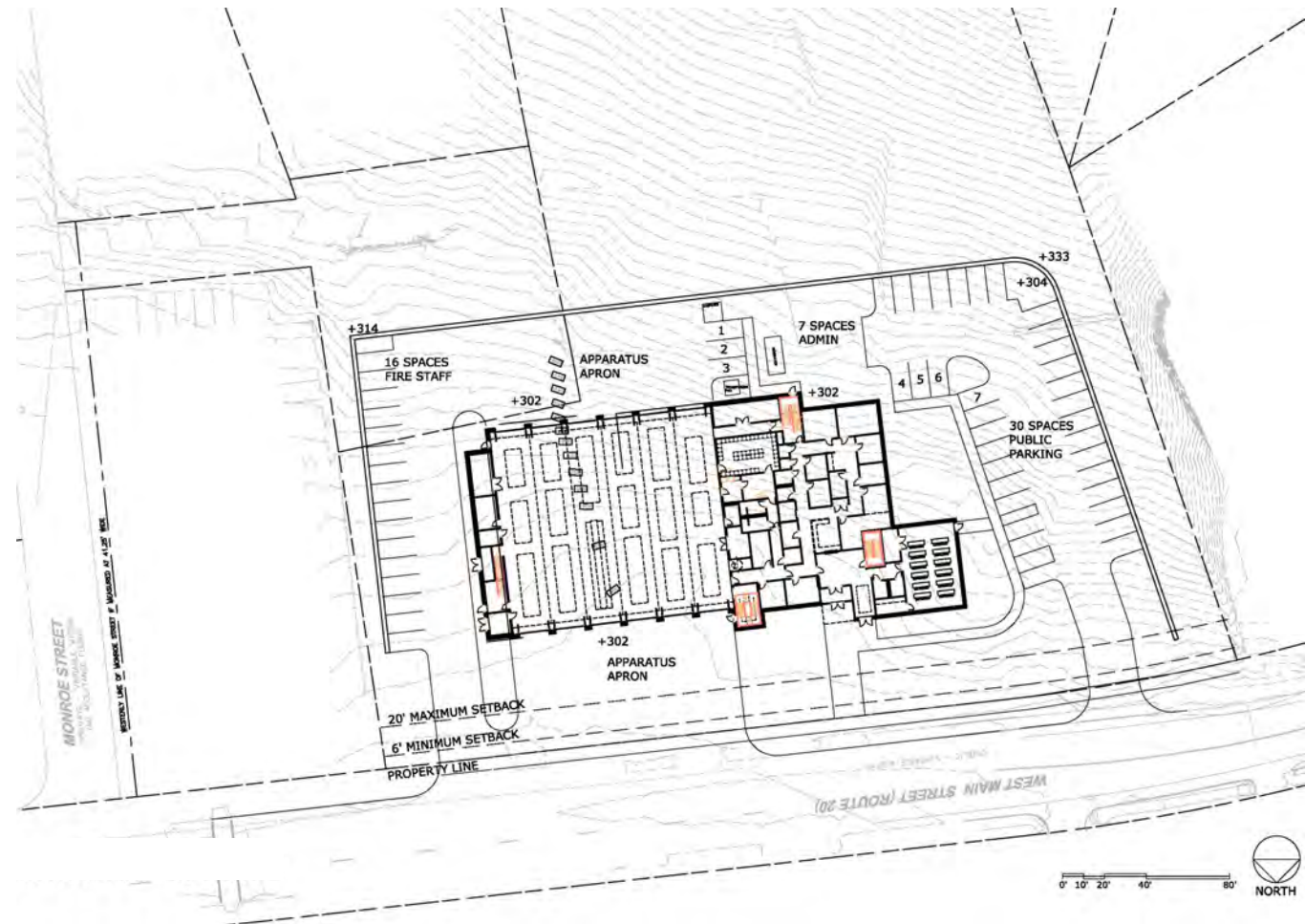
PREFERRED PLACEMENT OF BUILDING + PARKING TO SUPPORT OPERATIONS

- Site challenges
 - Parking spaces required
 - Apparatus bay depth
 - Apron size for turning radius
 - Retaining wall requirements
- Site requirements to support operations
 - Line-of-sight
 - Apparatus turning requirements
 - Separation of professional + public parking
 - Safety for public using parking + movement of response vehicles



PREFERRED PLACEMENT OF BUILDING + PARKING TO SUPPORT OPERATIONS

- Parking + drive aisles:
 - Access from West Main Street
 - Safety considerations
 - Public parking west of building
- Apparatus Apron:
 - Depth to support apparatus as they enter + exit site
 - Line-of-sight
 - Turning radius
- Retaining wall requirements
- Planting Opportunities



CONCEPT DEVELOPMENT LEVEL 1

- Entry faces West Main St.
- 6 Bay Apparatus with doors facing north + south
- Operations support spaces primarily located between apparatus floor + administrative offices
- Plumbing/fire protection + electrical located on outside walls along south + east
- Administrative areas on entry level along with Training Room / EOC / Community Use Space



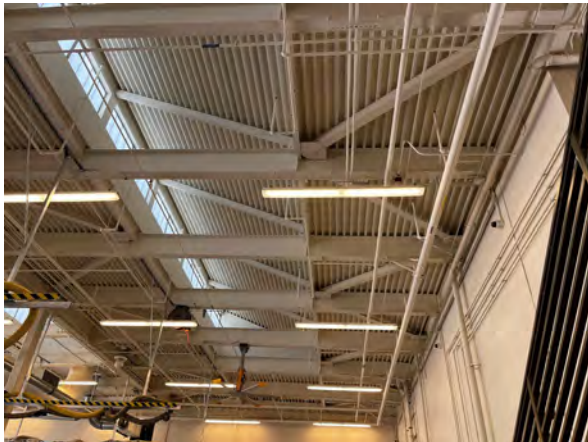
CONCEPT DEVELOPMENT LEVEL 2

- Dorm spaces on north side with easy access to stairs + slide pole
- Day room + kitchen located on west + south side with outdoor area
- Remainder of spaces used for mechanical/electrical



NEXT STEPS

- Continued development of plans, massing + elevations
- FD Building Committee Meeting
- Submit Design Review documents
- Public Meetings



THANK YOU

